

4

3

2

1

ELECTRICAL DATA:

- 1 IMPEDANCE: 50 Ω
- 2 FREQUENCY RANGE: DC~18 GHz
- 3 VSWR: 1.30 MAX
- 4 INSERTION LOSS: 0.70dB MAX

D

D

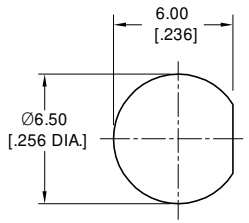
C

B

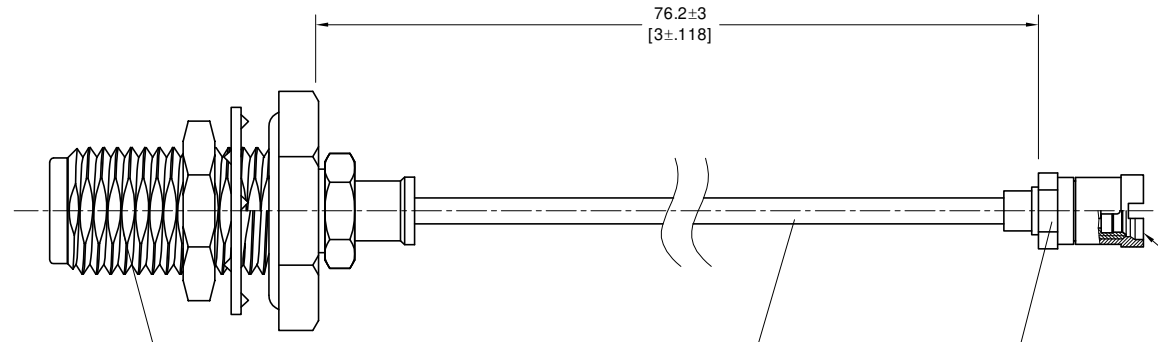
B

A

A



RECOMMENDED MOUNTING HOLE



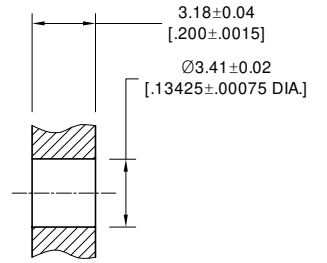
2.92MM FEMALE

SR047TP CABLE

SMPM MALE

SMPM MALE
SMOOTH BORE
PRE MIL-STD-348B

RECOMMENDED MOUNTING HOLE



TITLE
 CABLE ASSEMBLY, 2.92 FEMALE BULKHEAD
 WATERPROOF TO SMPM STRAIGHT MALE BULKHEAD,
 ANO SR047TP CABLE, 3 INCHES

NOTES:
 1. UNLESS OTHERWISE SPECIFIED ALL DIMENSIONS ARE NOMINAL.
 2. ALL SPECIFICATIONS ARE SUBJECT TO CHANGED WITHOUT NOTICE AT ANY TIME
 3. DIMENSIONS ARE IN MILLIMETERS, DIMENSIONS IN [] ARE IN INCHES
 4. LENGTH TOLERANCE IS ±2%.

VIEW	PART NO.			
	SR047TP-29FBW-SMPM(M)B-3			
SIZE	SCALE	SHEET	REV.	
A3	4:1	1/1	A	

4

3

2

1