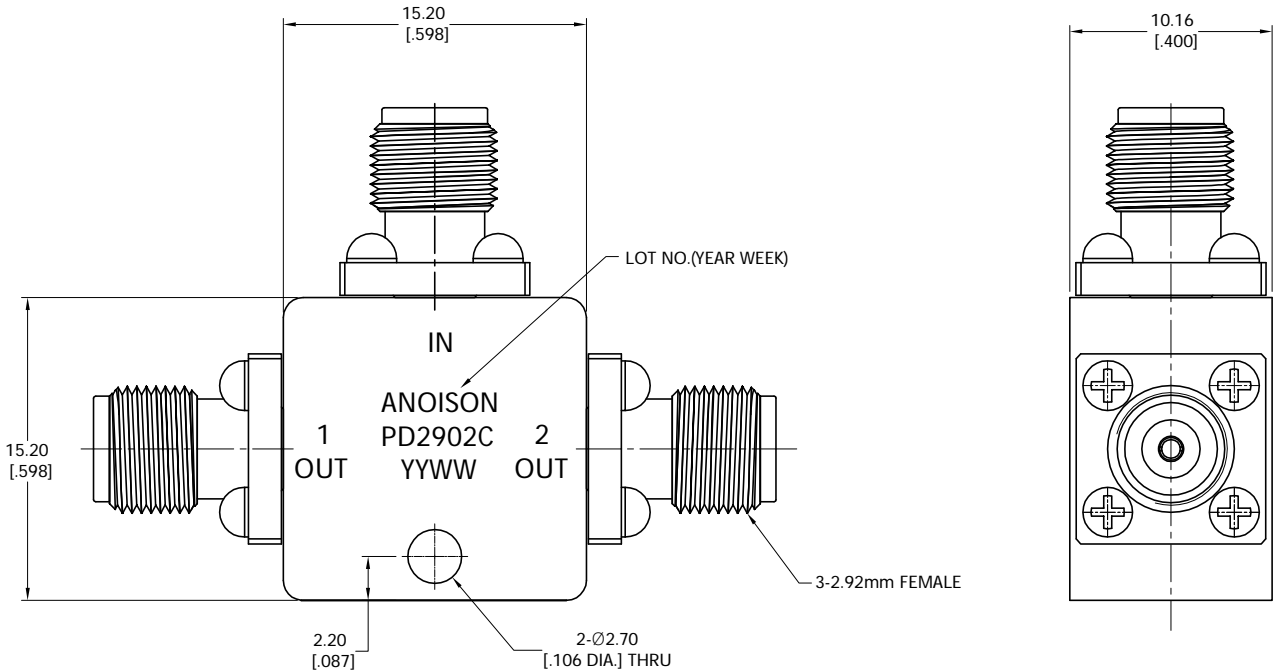


ELECTRICAL DATA	
NUMBER OF OUTPUT PORTS	2
FREQUENCY RANGE	DC~40 GHz
IMPEDANCE: 50 Ω	50 Ω
VSWR	≤ 1.50
INSERTION LOSS	≤ 2.0 dB (DOES NOT CONTAIN THEORY LOSS 6.02dB)
AMPLITUDE BLANCE	≤ ± 0.5 dB
PHASE BALANCE	≤ ± 5°
POWER	FORWARD: 0.1W Max. ; REVERSE: 0.1W Max.

MATERIAL AND FINISH	
CONNECTOR(2.92 MM FEMALE)	STAINLESS STELL, PASSIVATED
HOUSING	6061 ALUMINUM ALLOY, PAINTED, BLACK

ENVIRONMENTAL DATA	
OPERATING TEMPERATURE	-40°C TO +80°C
RoHS COMPLIANT	2011/65/EU(RoHS) AND 2015/863/(RoHS)
REACH COMPLIANT	1999/2006/EC(REACH)
NET WEIGHT	0.02Kg

REVISIONS			
REV.	DESCRIPTION	DATE	APPROVED
A	INITIAL RELEASE	11/24/25	J. Q



DRAWN	P. C	DATE	11/24/25
CHECKED	X. Y	DATE	11/24/25
APPROVED	J. Q	DATE	11/24/25
UNLESS OTHERWISE SPECIFIED DIMENSIONS ARE IN MILLIMETERS, DIMENSIONS IN [ ] ARE IN INCHES FOR CUSTOMER REFERENCE ONLY UNLESS OTHERWISE SPECIFIED TOLERANCE ARE:		THESE DRAWINGS AND SPECIFICATIONS ARE THE PROPERTY OF ANOISON ELECTRONICS LTD AND SHOULD NOT BE USED WITHOUT WRITTEN PERMISSION COPYRIGHT © 2025 ANOISON ELECTRONICS LTD	
XX	±0.30 [0.12"]		
X	±0.40 [0.16"]		
X	±0.50 [0.19"]		
X"	±1"		
X"	±2"		

TITLE DC-40GHz 2-WAY 2.92 POWER DIVIDER			
VIEW 		PART NO. PD2902C	
SIZE A3	SCALE 4:1	SHEET 1/1	REV. A