

4

3

2

1

ELECTRICAL DATA

NUMBER OF OUTPUT PORTS	4
FREQUENCY RANGE	2~8 GHz
IMPEDANCE: 50 Ω	50 Ω
VSWR	≤ 1.40
INSERTION LOSS	≤ 7.5 DB
ISOLATION	>17 DB
AMPLITUDE BLANCE	± 0.4 DB
PHASE BALANCE	± 5°
INPUT POWER	30 W MAX.

MATERIAL AND FINISH

CONNECTOR(2.92 MM FEMALE)	STAINLESS STEEL, PASSIVATED
HOUSING	6061 ALUMINUM ALLOY, PAINTED, GRAY COLOR

REVISIONS

REV.	DESCRIPTION	DATE	APPROVED
A	INITIAL RELEASE	06/22/20	J QU

ENVIRONMENTAL DATA

OPERATING TEMPERATURE	-55°C TO +125°C
STORAGE TEMPERATURE	-55°C TO +100°C
RoHS COMPLIANT	2011/65/EU(RoHS) AND 2015/863/(RoHS)
REACH COMPLIANT	1907/2006/EC(REACH)

D

D

C

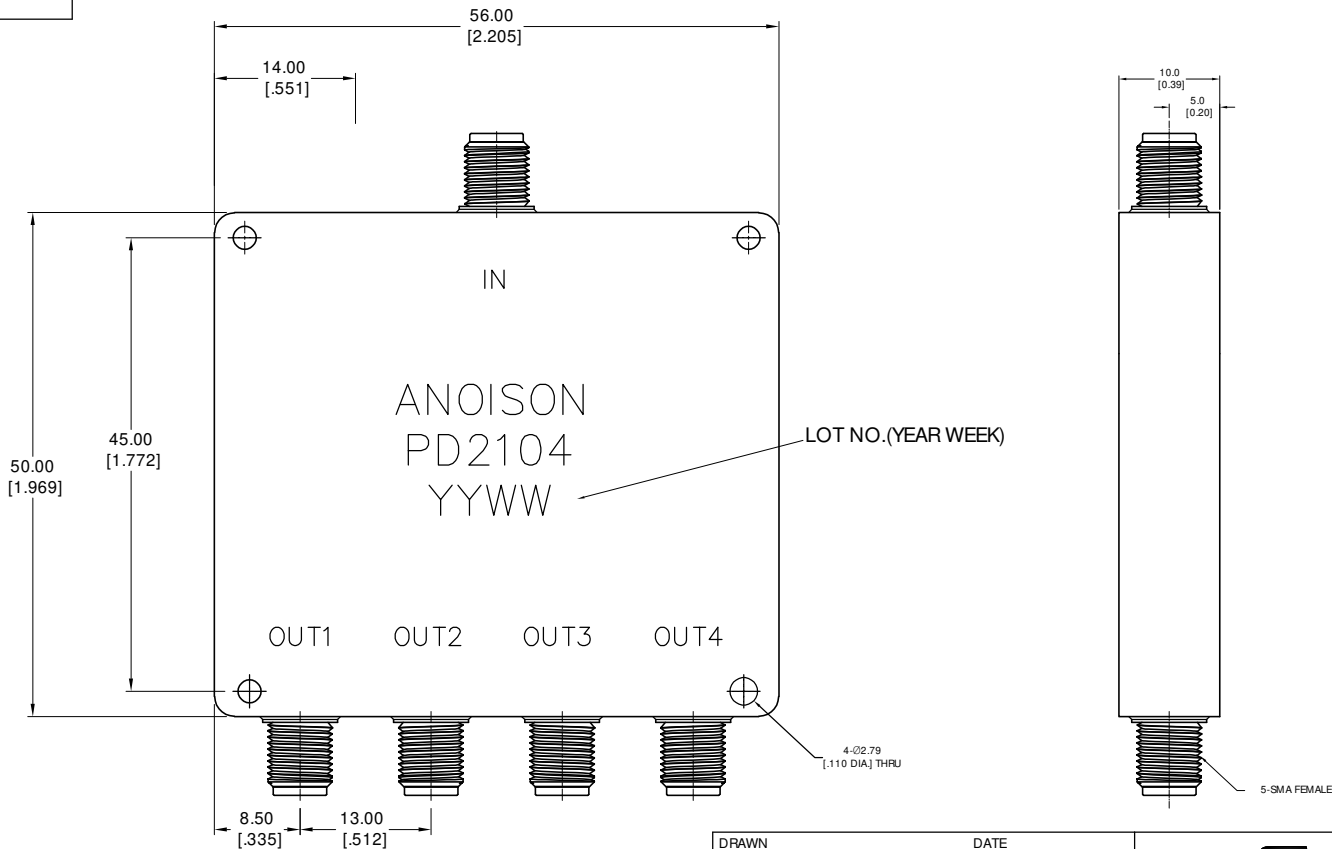
C

B

B

A

A



DRAWN	W. YANG	DATE	06/22/20
CHECKED	X. B. YANG	DATE	06/22/20
APPROVED	J QU	DATE	06/22/20
UNLESS OTHERWISE SPECIFIED DIMENSIONS ARE IN MILLIMETERS, DIMENSIONS IN [] ARE IN INCHES FOR CUSTOMER REFERENCE ONLY UNLESS OTHERWISE SPECIFIED TOLERANCE ARE:		THESE DRAWINGS AND SPECIFICATIONS ARE THE PROPERTY OF ANOISON ELECTRONICS LTD AND SHOULD NOT BE USED WITHOUT WRITTEN PERMISSION COPYRIGHT © 2020 ANOISON ELECTRONICS LTD	
XX	±0.13 [0.005"]		
X	±0.20 [0.008"]		
X	±0.50 [0.019"]		
X°	±1°		
X°	±2°		

ANOISON
...we create connection for technologies

TITLE
2-8GHz 4-WAY SMA POWER DIVIDER

VIEW

PART NO.
PD2104

SIZE	A3	SCALE	3:1	SHEET	1/1	REV.	A
------	----	-------	-----	-------	-----	------	---