

MATERIAL & FINISH:

- 1 BODY: STAINLESS STEEL, PASSIVATED
- 2 CENTER CONTACT: BERYLLIUM COPPER ALLOY, GOLD PLATED
- 3 INSULATOR: PEI
- 4 COUPLING NUT: STAINLESS STEEL, PASSIVATED

ELECTRICAL SPECIFICATIONS:

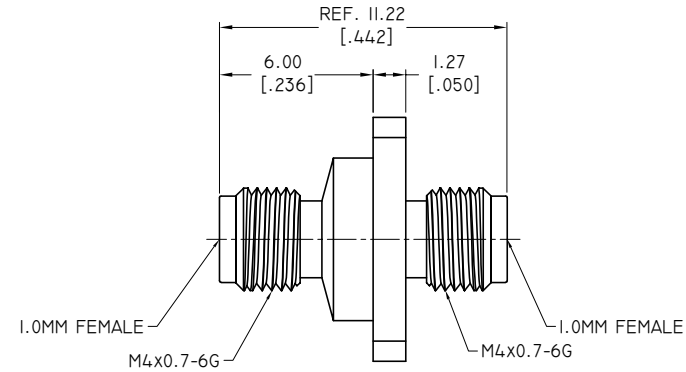
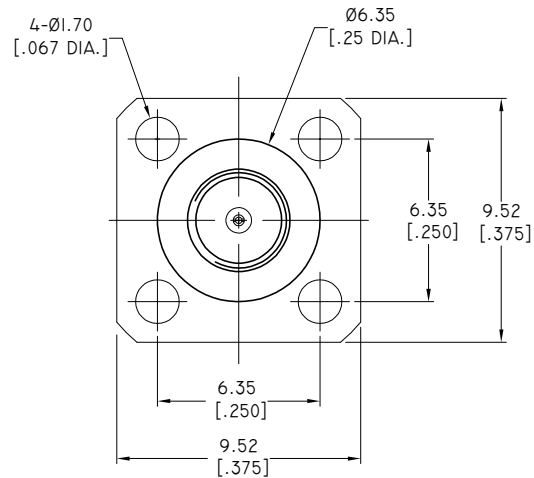
- 1 IMPEDANCE: 50 Ω
- 2 FREQUENCY RANGE: DC~110GHZ



ENVIRONMENTAL DATA:

- 1 TEMPERATURE RANGE: -55°C~+125°C
- 2 2011/65/EU (RoHS): COMPLIANT AND 2015/863/(RoHS): COMPLIANT
1999/45/EC(REACH): COMPLIANT

REVISIONS

REV.	DESCRIPTION	DATE	APPROVED
A	INITIAL RELEASE	04/15/20	J. QU



DRAWN	W. YANG	DATE	04/15/20
CHECKED	X. B. YANG	DATE	04/15/20
APPROVED	J. QU	DATE	04/15/20
UNLESS OTHERWISE SPECIFIED DIMENSIONS ARE IN MILLIMETERS, DIMENSIONS IN [] ARE IN INCHES FOR CUSTOMER REFERENCE ONLY UNLESS OTHERWISE SPECIFIED TOLERANCE ARE:		THESE DRAWINGS AND SPECIFICATIONS ARE THE PROPERTY OF ANOISON ELECTRONICS LTD AND SHOULD NOT BE USED WITHOUT WRITTEN PERMISSION COPYRIGHT © 2020 ANOISON ELECTRONICS LTD	
.XX ±0.13 [.005"]			
.X ±0.20 [.008"]			
X ±0.50 [.019"]			
.X° ±1°			
X° ±2°			
<div><div></div><div><div>TITLE</div><div>PRECISION ADAPTER, 1.0MM FEMALE TO 1.0MM FEMALE 4 HOLE .375 FLANGE</div></div></div>			
VIEW		PART NO.	
		PA7676F	
SIZE		SCALE	SHEET
A3		5:1	1/1
		REV.	A