

4

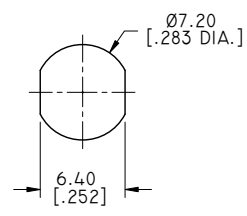
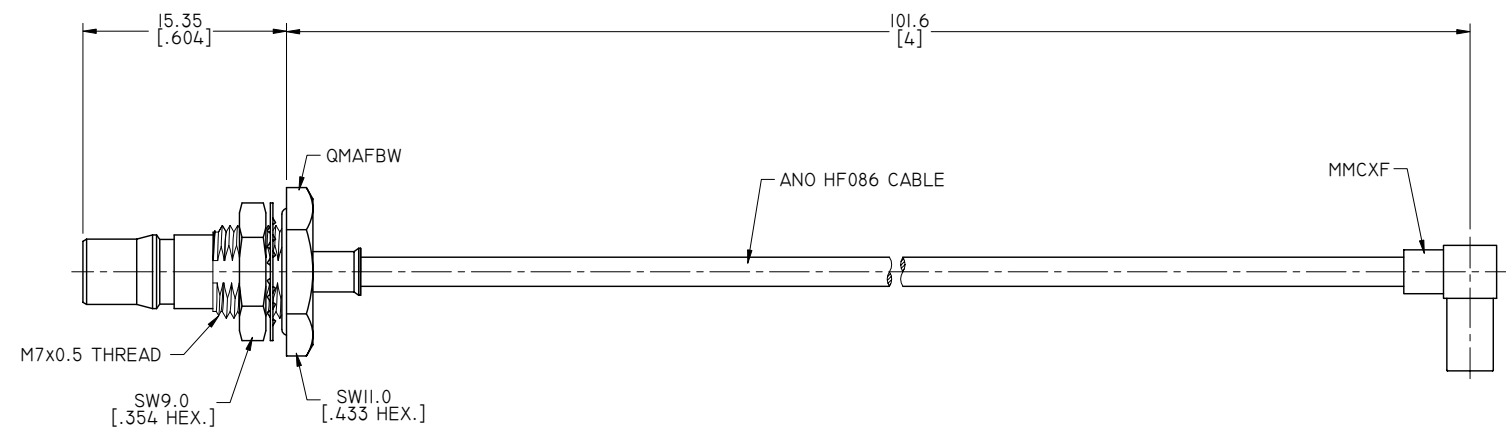
3

2

1

ELECTRICAL DATA:

- 1 IMPEDANCE: 50 OHMS
- 2 FREQUENCY RANGE: DC~6 GHZ



RECOMMENDED MOUNTING HOLE



TITLE  
 CABLE ASSEMBLY, QMA STRAIGHT FEMALE BULKHEAD WATERPROOF TO MMCX RIGHT ANGLE FEMALE, ANO HF086 CABLE, 4 INCHES

- NOTES:  
 1. UNLESS OTHERWISE SPECIFIED ALL DIMENSIONS ARE NOMINAL.  
 2. ALL SPECIFICATIONS ARE SUBJECT TO CHANGED WITHOUT NOTICE AT ANY TIME.  
 3. DIMENSIONS ARE IN MILLIMETERS, DIMENSIONS IN [ ] ARE IN INCHES  
 4. LENGTH TOLERANCE IS ±2%.

VIEW	PART NO. HF086-QMAFBW-MMCXL4			
	SIZE A3	SCALE 2.5:1	SHEET 1/1	REV. A

4

3

2

1

D

D

C

C

B

B

A

A