

4

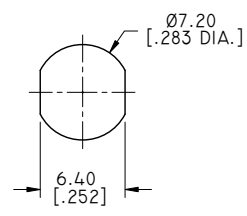
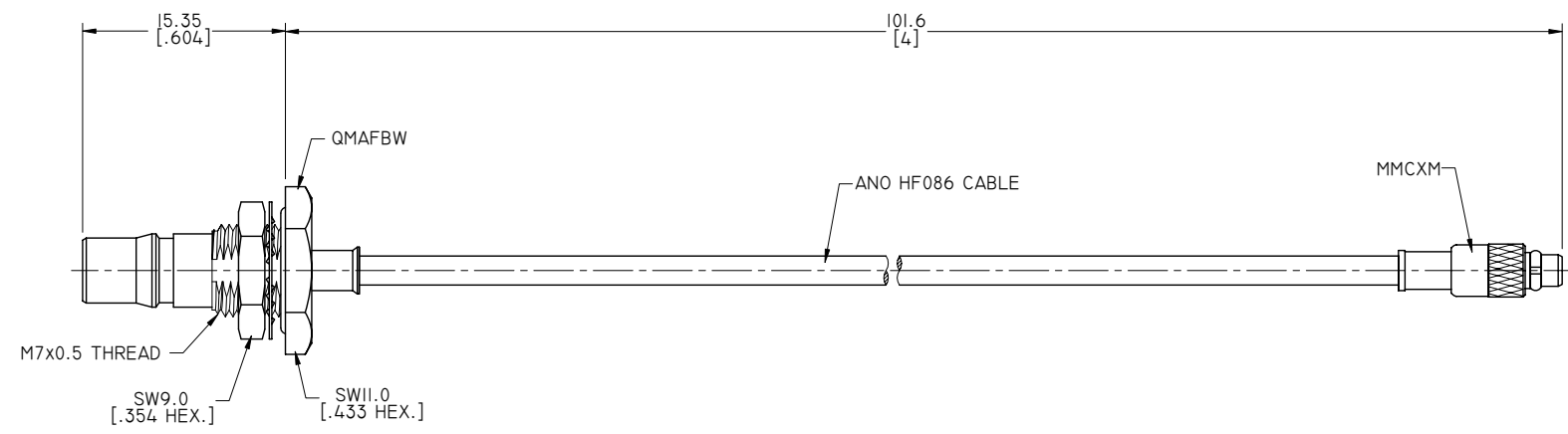
3

2

1

ELECTRICAL DATA:

- 1 IMPEDANCE: 50 OHMS
- 2 FREQUENCY RANGE: DC~6 GHZ



RECOMMENDED MOUNTING HOLE



TITLE
 CABLE ASSEMBLY, QMA STRAIGHT FEMALE BULKHEAD WATERPROOF TO MMCX STRAIGHT MALE, ANO HF086 CABLE, 4 INCHES

- NOTES:
- 1. UNLESS OTHERWISE SPECIFIED ALL DIMENSIONS ARE NOMINAL.
 - 2. ALL SPECIFICATIONS ARE SUBJECT TO CHANGED WITHOUT NOTICE AT ANY TIME.
 - 3. DIMENSIONS ARE IN MILLIMETERS, DIMENSIONS IN [] ARE IN INCHES
 - 4. LENGTH TOLERANCE IS ±2%.

VIEW		PART NO.			
		HF086-MAFBW-MMCXM-4			
		SIZE	SCALE	SHEET	REV.
		A3	2.5:1	I/1	A

4

3

2

1