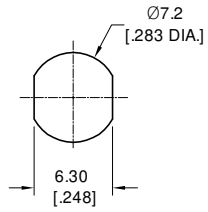
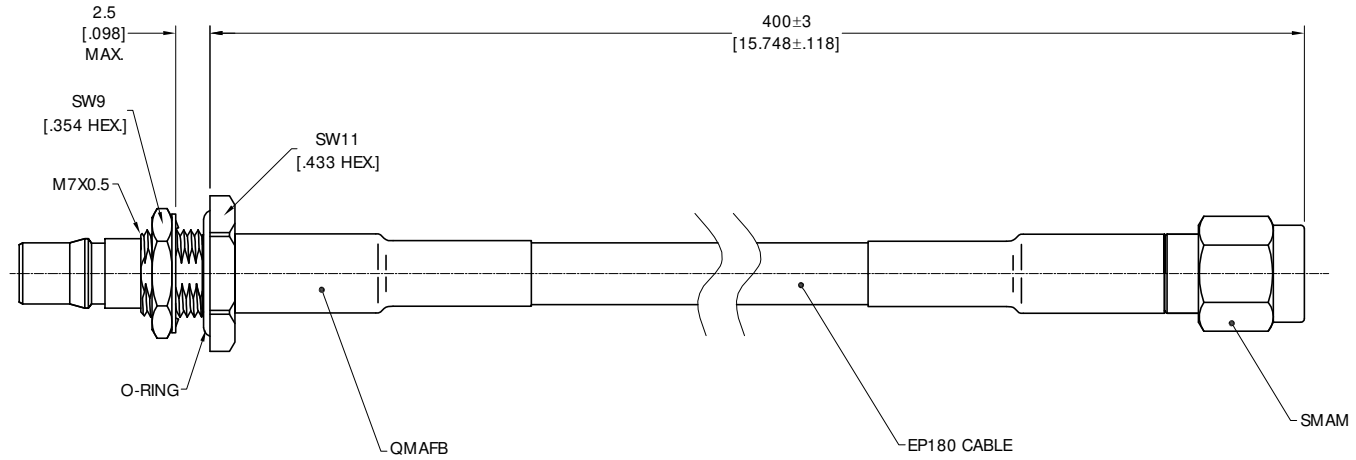


**ELECTRICAL DATA:**

- 1 IMPEDANCE: 50 Ω
- 2 FREQUENCY RANGE: DC-6 GHz
- 3 VSWR: 1.25 MAX
- 4 INSERTION LOSS: 1.15 dB MAX



RECOMMENDED MOUNTING HOLE



TITLE  
CABLE ASSEMBLY, QMA STRIGHT BULKHEAD  
WATERPROOF FEMALE TO SMA STRAIGHT MALE,  
EP180 CABLE

- NOTES:
1. UNLESS OTHERWISE SPECIFIED ALL DIMENSIONS ARE NOMINAL.
  2. ALL SPECIFICATIONS ARE SUBJECT TO CHANGED WITHOUT NOTICE AT ANY TIME
  3. DIMENSIONS ARE IN MILLIMETERS, DIMENSIONS IN [ ] ARE IN INCHES
  4. LENGTH TOLERANCE IS ±2%.

VIEW



PART NO.

EP180-QMAFB-SM-0.4M

SIZE  
A3

SCALE  
2.5:1

SHEET  
1/1

REV.  
A