

4

3

2

1

REVISIONS			
REV.	DESCRIPTION	DATE	APPROVED
A	INITIAL RELEASE	10/25/16	J. QU

MATERIAL & FINISH:

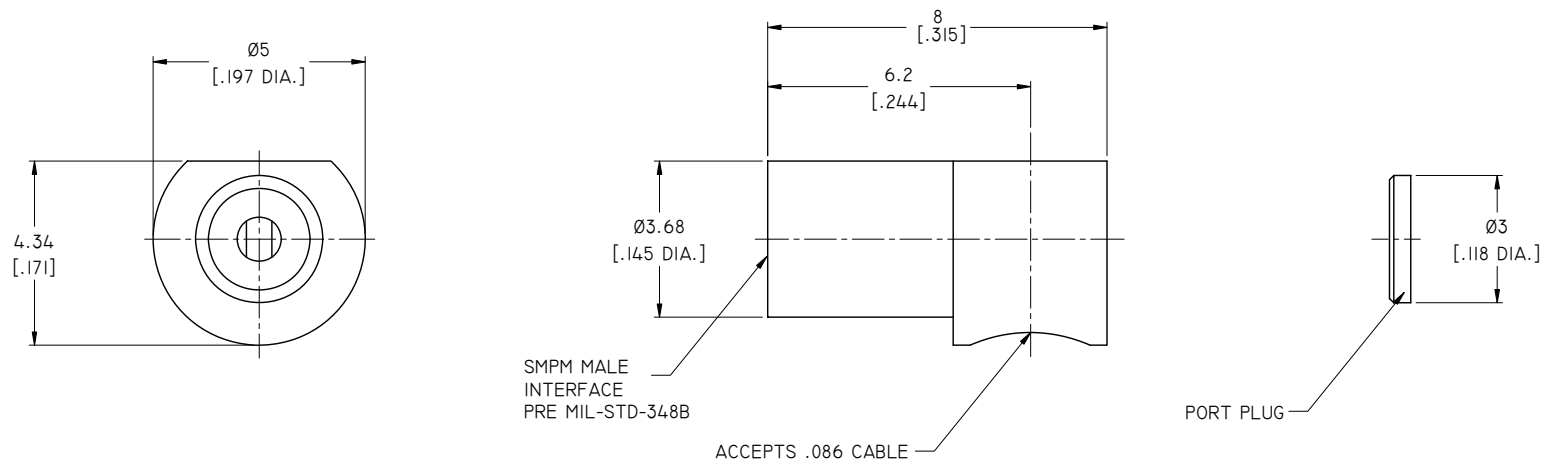
- 1. CENTER CONTACT: BERYLLIUM COPPER ALLOY, GOLD PLATED
- 2. BODY: STAINLESS STEEL, GOLD PLATED
- 3. INSULATOR: PTFE

ENVIRONMENTAL DATA:

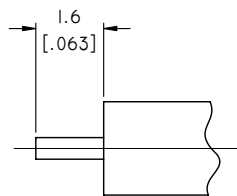
- 1. TEMPERATURE RANGE: -65°C~+165°C
- 2. 2002/95/EC (RoHS): COMPLIANT

ELECTRICAL SPECIFICATIONS:

- 1. IMPEDANCE: 50 Ω
- 2. FREQUENCY RANGE: DC-50GHZ
- 3. VSWR: 1.35 TYPICAL AT DC-18GHZ



PART NO.	TYPE	FORCE TO ENGAGE	FORCE TO DISENGAGE
ANO 9421-2011-1	FULL DETENT	20 N	28.9 N
ANO 9421-2011-2	SMOOTH BORE	11.13 N	6.68 N



CABLE STRIPPING DIMENSIONS

DRAWN P. CHEN	DATE 10/25/16									
CHECKED L. YANG	DATE 10/25/16									
APPROVED J. QU	DATE 10/25/16									
<small>UNLESS OTHERWISE SPECIFIED DIMENSIONS ARE IN MILLIMETERS, DIMENSIONS IN [] ARE IN INCHES FOR CUSTOMER REFERENCE ONLY UNLESS OTHERWISE SPECIFIED TOLERANCE ARE:</small>		TITLE SMPM R/A MALE SOLDER FOR .086 CABLE								
<small>THESE DRAWINGS AND SPECIFICATIONS ARE THE PROPERTY OF ANOISON ELECTRONICS LTD AND SHOULD NOT BE USED WITHOUT WRITTEN PERMISSION COPYRIGHT © 2016 ANOISON ELECTRONICS LTD</small>		<table border="1"> <tr> <td>VIEW</td> <td>PART NO. ANO 9421-2011</td> </tr> <tr> <td> </td> <td> <table border="1"> <tr> <td>SIZE A3</td> <td>SCALE 8:1</td> <td>SHEET 1/1</td> <td>REV. A</td> </tr> </table> </td> </tr> </table>	VIEW	PART NO. ANO 9421-2011		<table border="1"> <tr> <td>SIZE A3</td> <td>SCALE 8:1</td> <td>SHEET 1/1</td> <td>REV. A</td> </tr> </table>	SIZE A3	SCALE 8:1	SHEET 1/1	REV. A
VIEW	PART NO. ANO 9421-2011									
	<table border="1"> <tr> <td>SIZE A3</td> <td>SCALE 8:1</td> <td>SHEET 1/1</td> <td>REV. A</td> </tr> </table>	SIZE A3	SCALE 8:1	SHEET 1/1	REV. A					
SIZE A3	SCALE 8:1	SHEET 1/1	REV. A							

4

3

2

1