

4 3 2 1

MATERIAL & FINISH:

- 1 BODY: BRASS, GOLD PLATED
- 2 OUTER CONTACT: BERYLLIUM COPPER ALLOY, GOLD PLATED
- 3 CENTER CONTACT: BERYLLIUM COPPER ALLOY, GOLD PLATED
- 4 INSULATOR: PTFE

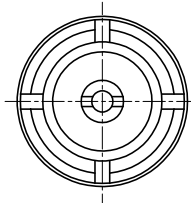
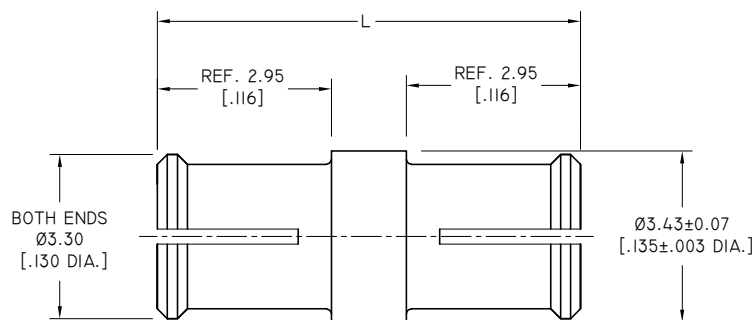
ENVIRONMENTAL DATA:

- 1 TEMPERATURE RANGE: -40°C~+125°C
- 2 2011/65/EU (RoHS): COMPLIANT

ELECTRICAL DATA:

- 1 IMPEDANCE: 50 Ω
- 2 FREQUENCY RANGE: DC~40GHZ
- 3 VSWR: 1.10 MAX. AT DC TO 8GHZ
1.35 MAX. AT 8 TO 26.5GHZ
1.60 MAX. AT 26.5 TO 40GHZ
- 4 INSERTION LOSS: 0.1X√F(GHZ) DB MAX.
- 5 VOLTAGE RATING: 335 V MAX.
- 6 DIELECTRIC WITHSTANDING VOLTAGE: 500 V MIN.
- 7 INSULATION RESISTANCE: 5000 MΩ MIN.

REVISIONS			
REV.	DESCRIPTION	DATE	APPROVED
L	PART NO. ANO 932-932-1259 REMOVED	08/04/17	J. Q
M	PART NO. ANO 932-932-1414 ADDED	08/05/17	J. Q
N	PART NO. ANO 932-932-1465 ADDED	08/09/18	J. Q
O	PART NO. ANO 932-932-1568 ADDED	08/26/21	J. Q
P	PART NO. ANO 932-932-1683 ADDED	08/26/24	J. Q



PART NO.	L
ANO 932-932-1082	6.45 [.254]
ANO 932-932-1414	7.00 [.276]
ANO 932-932-1260	7.26 [.286]
ANO 932-932-1252	8.49 [.334]
ANO 932-932-1273	9.40 [.370]
ANO 932-932-1274	9.50 [.374]
ANO 932-932-1271	9.60 [.378]
ANO 932-932-1261	10.03 [.395]
ANO 932-932-1269	14.28 [.562]
ANO 932-932-1323	22.40 [.882]
ANO 932-932-1407	15.24 [.600]
ANO 932-932-1465	12.59 [.496]
ANO 932-932-1568	14.88 [.586]
ANO 932-932-1683	19.53 [.769]

DRAWN	W. Y	DATE	08/26/24
CHECKED	X. Y	DATE	08/26/24
APPROVED	J. Q	DATE	08/26/24
UNLESS OTHERWISE SPECIFIED DIMENSIONS ARE IN MILLIMETERS, DIMENSIONS IN [] ARE IN INCHES FOR CUSTOMER REFERENCE ONLY UNLESS OTHERWISE SPECIFIED TOLERANCE ARE:		THESE DRAWINGS AND SPECIFICATIONS ARE THE PROPERTY OF ANOISON ELECTRONICS LTD AND SHOULD NOT BE USED WITHOUT WRITTEN PERMISSION COPYRIGHT © 2024 ANOISON ELECTRONICS LTD	
.XX	±0.13 [.005"]		
.X	±0.20 [.008"]		
X	±0.50 [.019"]		
X°	±1°		
X"	±2°		

TITLE
ADAPTER, SMP FEMALE TO SMP FEMALE

VIEW

PART NO.
ANO 932-932-XXXX

SIZE A3	SCALE 10:1	SHEET 1/1	REV. P
-------------------	----------------------	---------------------	------------------

4 3 2 1