

4

3

2

1

1.0 MATERIAL & FINISH

- 1.1 BODY: BERYLLIUM COPPER ALLOY, GOLD PLATED
 1.2 SPRING LATCH: BRASS, GOLD PLATED
 1.3 CENTER CONTACT: BERYLLIUM COPPER ALLOY, GOLD PLATED
 1.4 INSULATOR: PTFE

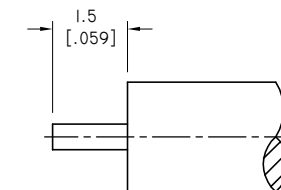
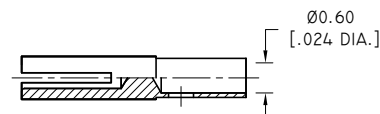
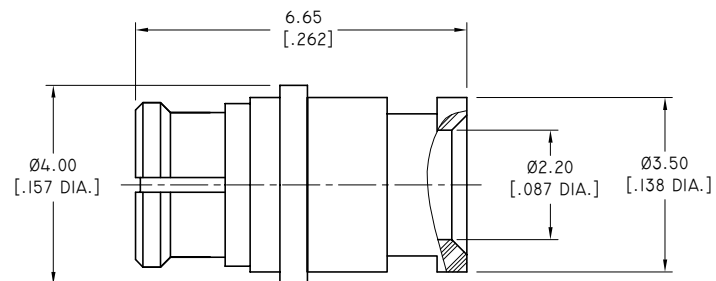
2.0 ENVIRONMENTAL DATA:

- 2.1 TEMPERATURE RANGE: -55 °C~+125 °C
 2.2 2011/65/EU (RoHS): COMPLIANT

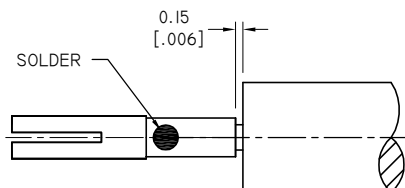
3.0 ELECTRICAL DATA:

- 3.1 IMPEDANCE: 50 Ω
 3.2 FREQUENCY RANGE: DC~40GHZ
 3.3 VSWR: ≤1.25 AT DC~26.5GHZ TYPICAL*
 3.4 INSERTION LOSS: 0.04 √F(GHZ)

REVISIONS			
REV.	DESCRIPTION	DATE	APPROVED
F	CHANGED DRAWINGS	09/06/19	J. QU
G	CHANGED ELECTRICAL DATA	09/10/21	J. QU
H	6.65[.262] WAS 6.35[.250]	03/25/24	J. QU


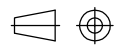


CABLE STRIPPING DIMENSIONS



SOLDER CENTRE CONTACT

* USERS ARE CAUTIONED THAT PERFORMANCE IS DEPENDENT ON THE SPECIFIC CABLE SELECTED AND CABLE PREPARATION AND TERMINATION, WHICH IS BEYOND THE CONTROL OF ANOISON ELECTRONICS.

DRAWN	P. CHEN	DATE	03/25/24				
CHECKED	X. B. YANG	DATE	03/25/24				
APPROVED	J. QU	DATE	03/25/24				
UNLESS OTHERWISE SPECIFIED DIMENSIONS ARE IN MILLIMETERS, DIMENSIONS IN [] ARE IN INCHES FOR CUSTOMER REFERENCE ONLY UNLESS OTHERWISE SPECIFIED TOLERANCE ARE:		THESE DRAWINGS AND SPECIFICATIONS ARE THE PROPERTY OF ANOISON ELECTRONICS LTD AND SHOULD NOT BE USED WITHOUT WRITTEN PERMISSION COPYRIGHT © 2024 ANOISON ELECTRONICS LTD		TITLE			
.XX ±0.13 [.005"] .X ±0.20 [.008"] X ±0.50 [.019"] X° ±1° X° ±2°				SMP STRAIGHT FEMALE SOLDER FOR .086 CABLE			
				VIEW	PART NO.		
					ANO 9312-2001		
				SIZE	SCALE	SHEET	REV.
				A3	10:1	I/I	H

4

3

2

1