

4

3

2

1

**MATERIAL & FINISH:**

- 1. BODY: STAINLESS STEEL, PASSIVATED
- 2. CENTER CONTACT: BERYLLIUM COPPER ALLOY, GOLD PLATED
- 3. INSULATOR: PEI
- 4. COUPLING NUT: STAINLESS STEEL, PASSIVATED
- 5. SCREW: STEEL, PASSIVATED

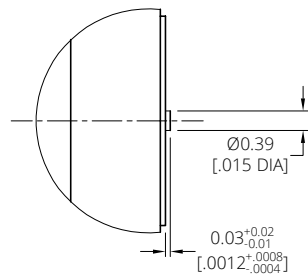
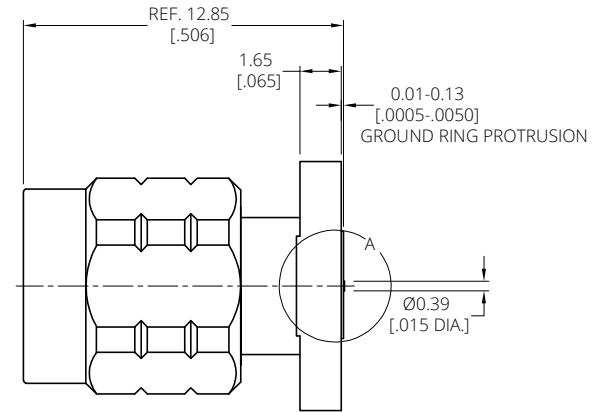
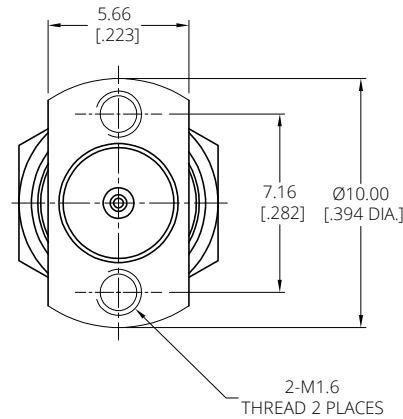
**ELECTRICAL DATA:**

- 1. IMPEDANCE: 50 OHMS
- 2. FREQUENCY RANGE: DC~65 GHz
- 3. VSWR: 1.35 MAX.

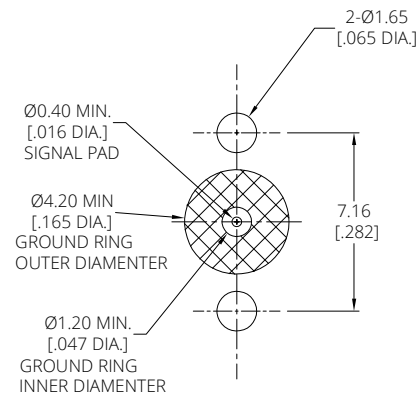
**ENVIRONMENTAL DATA:**

- 1. TEMPERATURE RANGE: -40°C~+125°C
- 2. 2011/65/EU(RoHS) AND 2015/863/(RoHS): COMPLIANT
- 3. 1999/45/EC(REACH): COMPLIANT

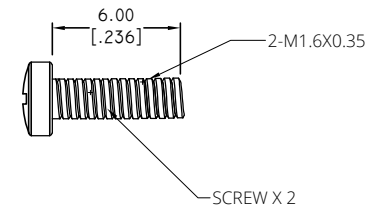
REVISIONS			
REV.	DESCRIPTION	DATE	APPROVED
A	INITIAL RELEASE	10/10/23	J. Q



DETAIL A



PCB LAYOUT RECOMMENDATIONS



DRAWN	W. Y	DATE	10/10/23
CHECKED	L. Y	DATE	10/10/23
APPROVED	J. Q	DATE	10/10/23
UNLESS OTHERWISE SPECIFIED DIMENSIONS ARE IN MILLIMETERS, DIMENSIONS IN [ ] ARE IN INCHES FOR CUSTOMER REFERENCE ONLY UNLESS OTHERWISE SPECIFIED TOLERANCE ARE:		THESE DRAWINGS AND SPECIFICATIONS ARE THE PROPERTY OF ANOISON ELECTRONICS LTD AND SHOULD NOT BE USED WITHOUT WRITTEN PERMISSION COPYRIGHT © 2023 ANOISON ELECTRONICS LTD	
XX	±0.13 [.005"]		
X	±0.20 [.008"]		
X*	±0.50 [.019"]		
X**	±1°		
X***	±2°		

TITLE 1.85MM MALE VERTICAL LAUNCH STRIPLINE, 2 HOLE FLANGE, COMPRESSION MOUNT			
VIEW 		PART NO. ANO 6211-3063	
SIZE A3	SCALE 5:1	SHEET 1/1	REV. A

4

3

2

1