

**MATERIAL & FINISH:**

- 1 BODY: BRASS, NICKEL PLATED
- 2 CENTER CONTACT: PHOSPHOR BRONZE, SILVER PLATED
- 3 COUPLING NUT: BRASS, NICKEL PLATED
- 4 INSULATOR: PTFE

**ELECTRICAL DATA:**

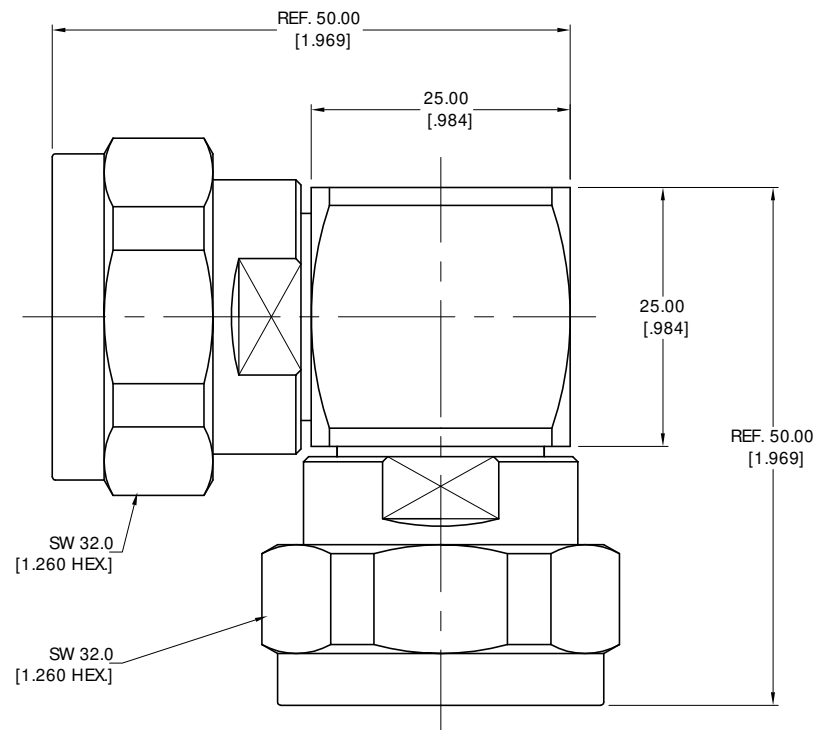
- 1 IMPEDANCE: 50  $\Omega$
- 2 FREQUENCY RANGE: DC~6 GHz
- 3 VSWR: 1.20 MAX. AT DC~3 GHz
- 4 WITHSTANDING VOLTAGE: 4000 VRMS MIN.

**ENVIRONMENTAL DATA:**

- 1 TEMPERATURE RANGE: -55°C~+125°C
- 2 2011/65/EU(RoHS) AND 2015/863/(RoHS): COMPLIANT
- 3 1907/2006/EC(REACH): COMPLIANT

## REVISIONS

REV.	DESCRIPTION	DATE	APPROVED
A	INITIAL RELEASE	05/18/20	J QU



DRAWN	X. B. YANG	DATE	05/18/20
CHECKED	W. YANG	DATE	05/18/20
APPROVED	J QU	DATE	05/18/20
UNLESS OTHERWISE SPECIFIED DIMENSIONS ARE IN MILLIMETERS. DIMENSIONS IN [ ] ARE IN INCHES FOR CUSTOMER REFERENCE ONLY UNLESS OTHERWISE SPECIFIED TOLERANCE ARE:		THESE DRAWINGS AND SPECIFICATIONS ARE THE PROPERTY OF ANOISON ELECTRONICS LTD AND SHOULD NOT BE USED WITHOUT WRITTEN PERMISSION COPYRIGHT © 2020 ANOISON ELECTRONICS LTD	
.XX ±0.13 [.005"] .X ±0.20 [.008"] X ±0.50 [.019"] .X° ±1° X° ±2°		VIEW 	
TITLE ADAPTER, RIGHT ANGLE 7/16 MALE TO 7/16 MALE		PART NO. ANO 561-561-2538	
SIZE A3		SCALE 2:1	SHEET 1/1
		REV. A	