

1.0 MATERIAL & FINISH

- 1.1. BODY: BRASS, ALBALOY PLATED
- 1.2. CENTER CONTACT: PHOSPHOR BRONZE, GOLD PLATED
- 1.3. INSULATOR: PTFE

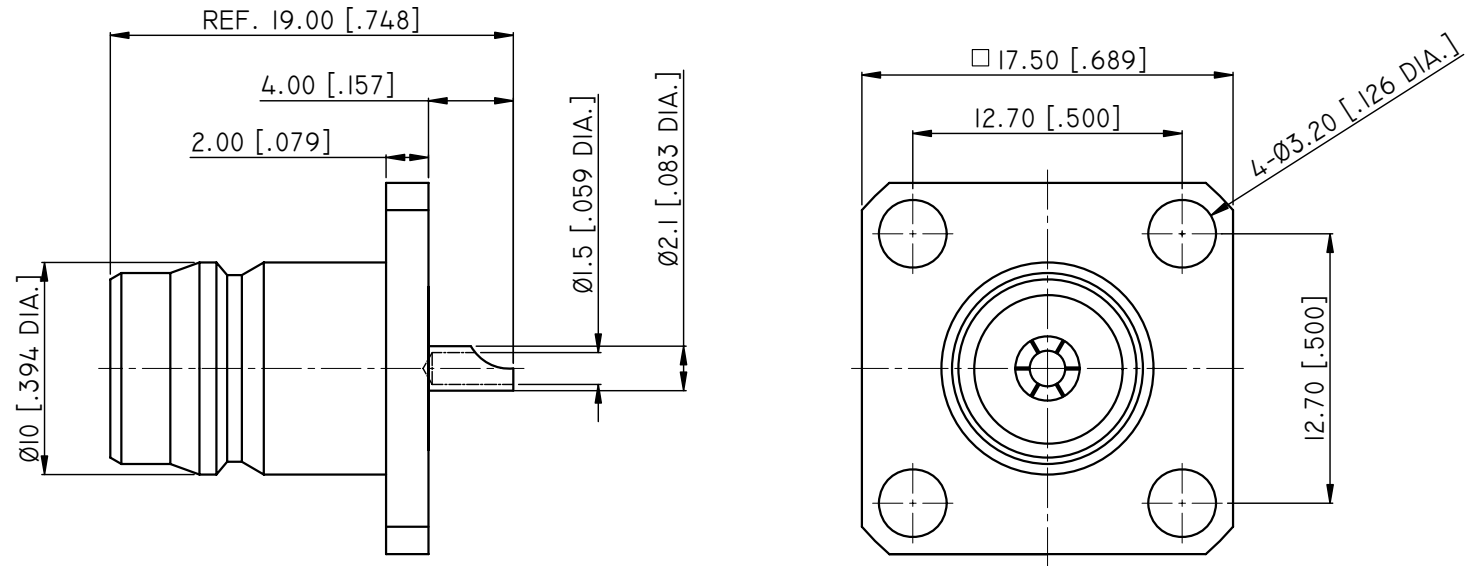
2.0 ENVIRONMENTAL DATA:



- 2.1 TEMPERATURE RANGE: -55°C~+125°C
- 2.2 2002/95/EC (RoHS): COMPLIANT

3.0 ELECTRICAL SPECIFICATIONS:

- 3.1 IMPEDANCE: 50 Ω
- 3.2 FREQUENCY RANGE: DC~11GHZ
- 3.3 VSWR: ≤1.30

REVISIONS			
REV.	DESCRIPTION	DATE	APPROVED
A	INITIAL RELEASE	09/01/14	J. QU



DRAWN	L. YANG	DATE	09/01/14					
CHECKED	X. B. YANG	DATE	09/01/14					
APPROVED	J. QU	DATE	09/01/14					
UNLESS OTHERWISE SPECIFIED DIMENSIONS ARE IN MILLIMETERS, DIMENSIONS IN [ ] ARE IN INCHES FOR CUSTOMER REFERENCE ONLY UNLESS OTHERWISE SPECIFIED TOLERANCE ARE:		THESE DRAWINGS AND SPECIFICATIONS ARE THE PROPERTY OF ANOISON ELECTRONICS LTD AND SHOULD NOT BE USED WITHOUT WRITTEN PERMISSION COPYRIGHT © 2014 ANOISON ELECTRONICS LTD		TITLE HPQN STRAIGHT FEMALE PANEL RECEPTACLE 4-HOLE FLANGE SOLDER CUP				
.XX ±0.13 [.005"] .X ±0.20 [.008"] X ±0.50 [.019"] .X° ±1° X° ±2°				VIEW	PART NO. ANO 5312-3029			
					SIZE A3	SCALE 4:1	SHEET 1/1	REV. A