

**MATERIAL & FINISH:**

- 1 BODY: SEE TABEL
- 2 CENTER CONTACT: PHOSPHOR BRONZE, GOLD PLATED
- 3 INSULATOR: PTFE

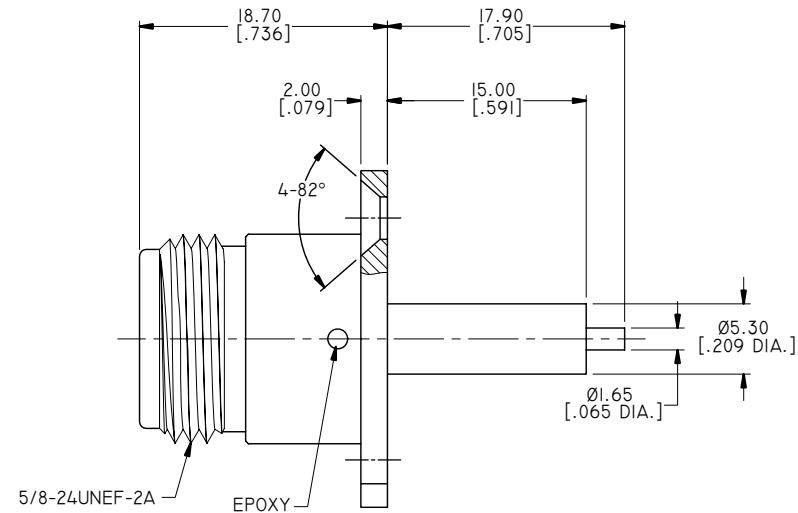
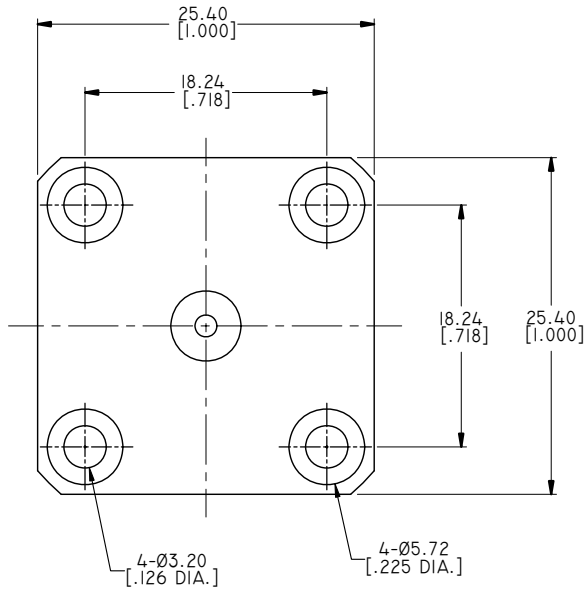
**ELECTRICAL DATA:**

- 1 IMPEDANCE: 50 Ω
- 2 FREQUENCY RANGE: DC~18 GHz
- 3 VSWR: 1.20 MAX.

**ENVIRONMENTAL DATA:**

- 1 TEMPERATURE RANGE: -40°C~+85°C
- 2 2011/65/EU (RoHS): COMPLIANT

REVISIONS			
REV.	DESCRIPTION	DATE	APPROVED
A	INITIAL RELEASE	05/12/14	J. QU
B	PART NO. ADDED	06/11/14	J. QU
C	DRAWING FORMAT CHANGED	08/25/17	J. QU



TABEL

PART NUMBER	BODY	
	MATERIAL	FINISH
ANO 5112-3187	BRASS	NICKEL
ANO 5112-3187-1	STAINLESS STEEL	PASSIVATED

DRAWN	X. B. YANG	DATE	08/25/17
CHECKED	P. CHEN	DATE	08/25/17
APPROVED	J. QU	DATE	08/25/17
UNLESS OTHERWISE SPECIFIED DIMENSIONS ARE IN MILLIMETERS. DIMENSIONS IN [ ] ARE IN INCHES FOR CUSTOMER REFERENCE ONLY UNLESS OTHERWISE SPECIFIED TOLERANCE ARE:		THESE DRAWINGS AND SPECIFICATIONS ARE THE PROPERTY OF ANOISON ELECTRONICS LTD AND SHOULD NOT BE USED WITHOUT WRITTEN PERMISSION COPYRIGHT © 2017 ANOISON ELECTRONICS LTD	
.XX	±0.13 [.005"]		
.X	±0.20 [.008"]		
X	±0.50 [.019"]		
.X°	±1°		
X°	±2°		



TITLE			
N STRAIGHT FEMALE, 4 HOLE 1 SQ FLANGE MOUNT			
VIEW		PART NO.	
		ANO 5112-3187	
SIZE	SCALE	SHEET	REV.
A3	2.5:1	1/1	C