

4

3

2

1

1.0 MATERIAL

- 1.1 BODY: BRASS
- 1.2 CENTER CONTACT: BERYLLIUM COPPER ALLOY
- 1.3 INSULATOR: PEI/PTFE

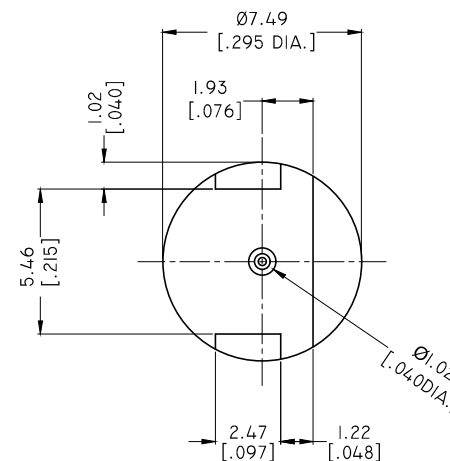
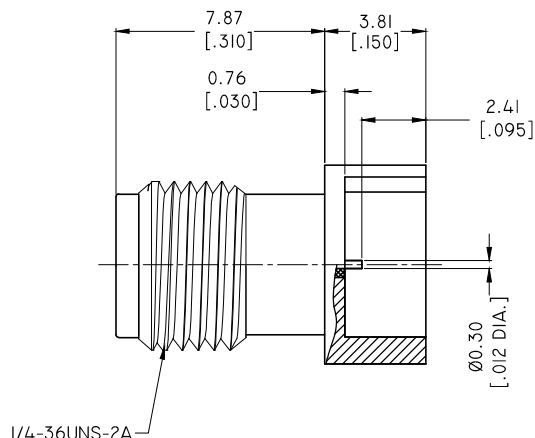
2.0 FINISH:

- 2.1 CENTER CONDUCTORS, BODY AND SOLDER COMPONENTS SHALL BE PLATED MIL-G-45204 TYPE II, CLASS I OVER NICKEL PLATE PER QQ-N-290

3.0 ELECTRICAL SPECIFICATIONS:

- 3.1 IMPEDANCE: 50 Ω
 - 3.2 FREQUENCY RANGE: DC~40GHZ
 - 3.3 VSWR: 1.30 MAX.
 - 3.4 INSERTION LOSS: 0.05 √F(GHZ)
- 4.0 ENVIRONMENTAL DATA:
- 4.1 TEMPERATURE RANGE: -55°C~+100°C
 - 4.2 CONTACT TORQUE: 4.0 INCH-OUNCES MIN.
 - 4.3 COUPLING NUT MATING TORQUE: 8-10 INCH-LBS
 - 4.4 DURABILITY: 500 CYCLES MIN.
 - 4.5 2011/65/EU(RoHS) AND 2015/863/(RoHS): COMPLIANT
1999/45/EC(REACH): COMPLIANT

REVISIONS			
REV.	DESCRIPTION	DATE	APPROVED
A	INITIAL RELEASE	09/16/19	J. QU



DRAWN	W. YANG	DATE	09/16/19
CHECKED	X. B. YANG	DATE	09/16/19
APPROVED	J. QU	DATE	09/16/19
UNLESS OTHERWISE SPECIFIED DIMENSIONS ARE IN MILLIMETERS. DIMENSIONS IN [] ARE IN INCHES FOR CUSTOMER REFERENCE ONLY UNLESS OTHERWISE SPECIFIED TOLERANCE ARE:		THESE DRAWINGS AND SPECIFICATIONS ARE THE PROPERTY OF ANOISON ELECTRONICS LTD AND SHOULD NOT BE USED WITHOUT WRITTEN PERMISSION COPYRIGHT © 2019 ANOISON ELECTRONICS LTD	
.XX	+0.13 [0.005"]		
.X	+0.20 [0.008"]		
X	+0.50 [0.019"]		
.X°	±1°		
X°	±2°		



TITLE			
2.92MM FEMALE PCB MOUNT FOR .042" BOARD			
VIEW		PART NO.	
		ANO 2912-4133	
SIZE	SCALE	SHEET	REV.
A3	5:1	1/1	A

4

3

2

1