

4

3

2

1

1.0 MATERIAL & FINISH:

- 1.1 BODY: STAINLESS STEEL, PASSIVATED
- 1.2 CENTER CONTACT: BERYLLIUM COPPER ALLOY, GOLD PLATED
- 1.3 COUPLING NUT: STAINLESS STEEL, PASSIVATED
- 1.4 INSULATOR: PEI
- 1.5 RETAINING RING: BERYLLIUM COPPER ALLOY, NICKEL PLATED

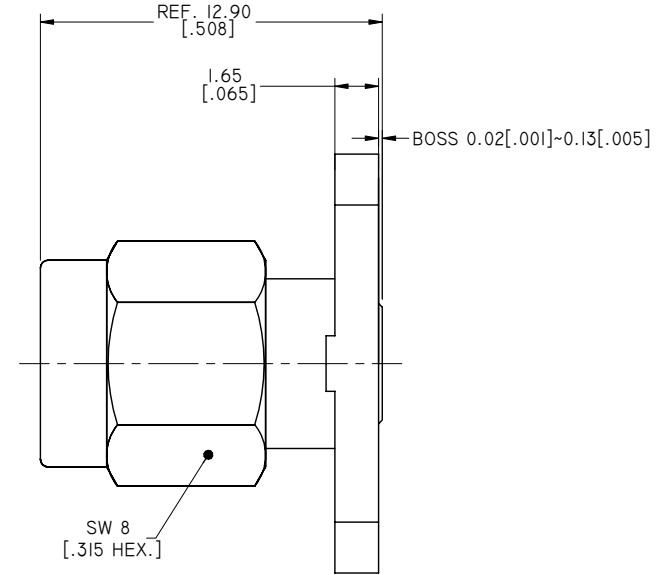
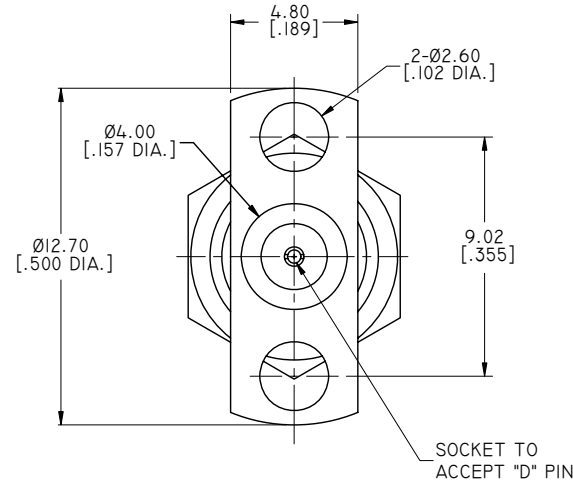
2.0 ENVIRONMENTAL DATA:

- 2.1 TEMPERATURE RANGE: -55°C~+135°C
- 2.2 2011/65/EU (RoHS): COMPLIANT

3.0 ELECTRICAL SPECIFICATIONS:

- 3.1 IMPEDANCE: 50 Ω
- 3.2 FREQUENCY RANGE: DC~40GHZ
- 3.3 VSWR: 1.10 MAX. @ DC~27GHZ
1.15 MAX. @ 27~40GHZ

REVISIONS			
REV.	DESCRIPTION	DATE	APPROVED
A	INITIAL RELEASE	06/12/15	J. QU
B	DRAWING FORMAT CHANGED	08/16/17	J. QU



PART NO.	D	MAX. PIN DEPTH
ANO 2911-3055-1	Ø0.23 [.009 DIA.]	1.65 [.065]
ANO 2911-3055-2	Ø0.30 [.012 DIA.]	1.52 [.060]
ANO 2911-3055-3	Ø0.51 [.020 DIA.]	1.65 [.065]

DRAWN	P. CHEN	DATE	08/16/17
CHECKED	X. B. YANG	DATE	08/16/17
APPROVED	J. QU	DATE	08/16/17
UNLESS OTHERWISE SPECIFIED DIMENSIONS ARE IN MILLIMETERS, DIMENSIONS IN [] ARE IN INCHES FOR CUSTOMER REFERENCE ONLY UNLESS OTHERWISE SPECIFIED TOLERANCE ARE:		THESE DRAWINGS AND SPECIFICATIONS ARE THE PROPERTY OF ANOISON ELECTRONICS LTD AND SHOULD NOT BE USED WITHOUT WRITTEN PERMISSION COPYRIGHT © 2017 ANOISON ELECTRONICS LTD	
.XX	±0.13 [.005"]		
.X	±0.20 [.008"]		
X	±0.50 [.019"]		
.X°	±1°		
X°	±2°		



TITLE			
2.92MM STRAIGHT MALE, 2 HOLES FLANGE FIELD REPLACEABLE			
VIEW		PART NO.	
		ANO 2911-3055	
SIZE	SCALE	SHEET	REV.
A3	5:1	I/1	B

4

3

2

1