

REVISIONS			
REV.	DESCRIPTION	DATE	APPROVED
A	INITIAL RELEASE	11/19/21	J. QU
B	RADIATOR: NATURAL WAS BLACK	12/25/24	J. QU

MATERIAL & FINISH:

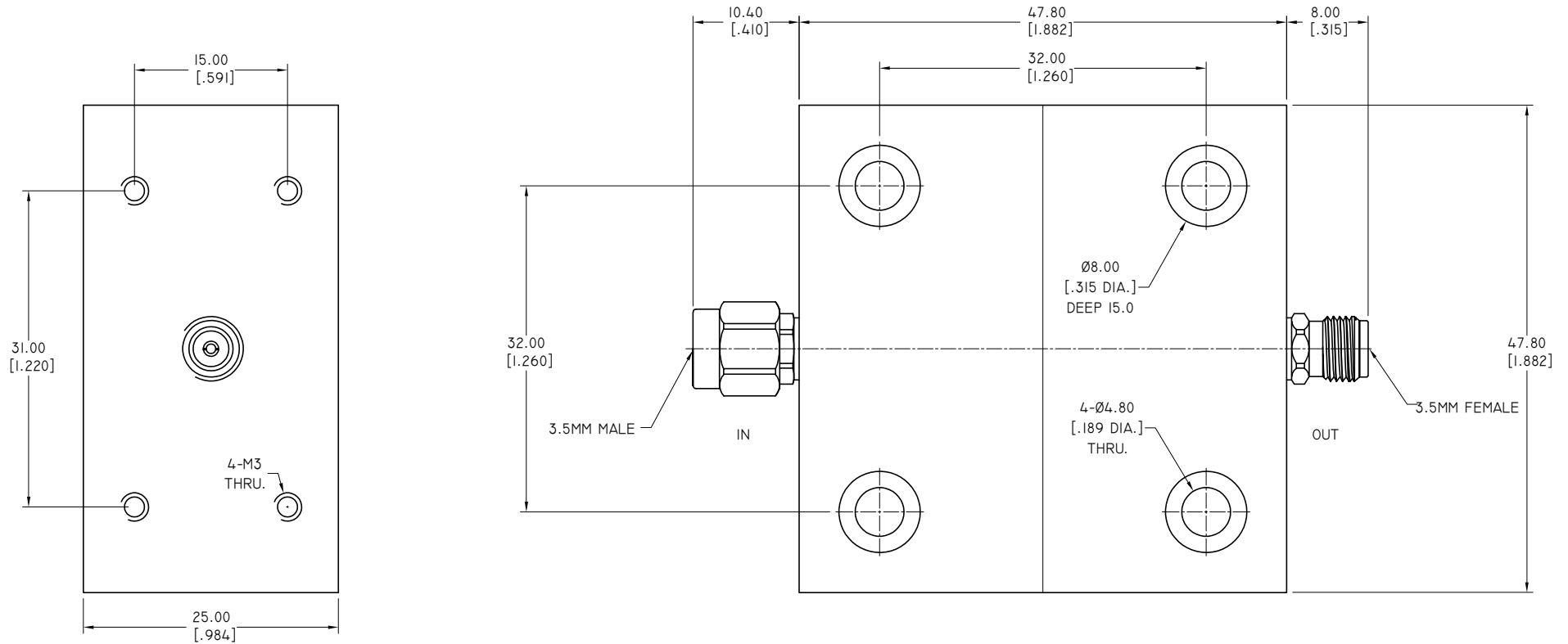
- 1 BODY: STAINLESS STEEL, PASSIVATED
- 2 CENTER CONTACT: BERYLLIUM COPPER ALLOY, GOLD PLATED
- 3 INSULATOR: PEI
- 4 COUPLING NUT: STAINLESS STEEL, PASSIVATED
- 5 RADIATOR: ALUMINIUM, NATURAL

ENVIRONMENTAL DATA:

- 1 TEMPERATURE RANGE: -55°C~+125°C
- 2 2011/65/EU(RoHS) AND 2015/863/(RoHS): COMPLIANT
- 3 1999/45/EC(REACH): COMPLIANT

ELECTRICAL DATA:

- 1 IMPEDANCE: 50 Ω
- 2 FREQUENCY RANGE: DC~30 GHZ
- 3 VSWR: 1.23 MAX.
- 4 AVERAGE POWER: 50W ON THE LEFT OR 13W ON THE RIGHT CORRESPONDS TO AN AMBIENT TEMPERATURE OF 25°C. WHEN THE AMBIENT TEMPERATURE RISE TO 100°C, THE POWER LINEARLY DECREASES TO 5W OR 2W
- 5 PEAK POWER: MAXIMUM POWER 1000 W (5μS PULSE WIDTH WITH THE MAXIMUM 5% OR 1% DUTY CYCLE)
- 6 ATTENUATOR ACCURACY: SEE TABLE
- 7 WORKING TIME: NO AIR COOLING, ≤5 MINUTES, COOLING TO BELOW 30°C CAN BE USED AGAIN; WHEN THERE IS AIR COOLING, AIR VOLUME ≥30CFM, LONG-TERM WORK



PART NO.	ATTENUATION VALUES & ACCURACY				
	6 DB	10 DB	20 DB	30 DB	40 DB
ANO 25-5001-XX	+2.0 DB -1.8 DB	+2.0 DB -1.8 DB	+1.2 DB -1.0 DB	±1.0 DB	±1.0 DB

NOTE: XX REFER TO ATTENUATION VALUE IN DB

DRAWN	W. YANG	DATE	11/25/24
CHECKED	X. B. YANG	DATE	11/25/24
APPROVED	J. QU	DATE	11/25/24
UNLESS OTHERWISE SPECIFIED DIMENSIONS ARE IN MILLIMETERS, DIMENSIONS IN [] ARE IN INCHES FOR CUSTOMER REFERENCE ONLY UNLESS OTHERWISE SPECIFIED TOLERANCE ARE:		THESE DRAWINGS AND SPECIFICATIONS ARE THE PROPERTY OF ANOISON ELECTRONICS LTD AND SHOULD NOT BE USED WITHOUT WRITTEN PERMISSION COPYRIGHT © 2021 ANOISON ELECTRONICS LTD	
.XX	±0.13 [.005"]		
.X	±0.25 [.010"]		
X	±0.50 [.019"]		
.X*	±1*		
X*	±2*		

TITLE
ATTENUATOR 3.5MM MALE TO 3.5MM FEMALE
50 WATT, DC~30GHZ

PART NO.
ANO 25-5001-XX

VIEW		SIZE	A3	SCALE	2.5:1	SHEET	I/I	REV.	B
-------------	--	-------------	----	--------------	-------	--------------	-----	-------------	---