

4

3

2

1

MATERIAL & FINISH:

- 1 BODY: STAINLESS STEEL, PASSIVATED
- 2 CENTER CONTACT: BERYLLIUM COPPER ALLOY, GOLD PLATING
- 3 INSULATOR: PEI

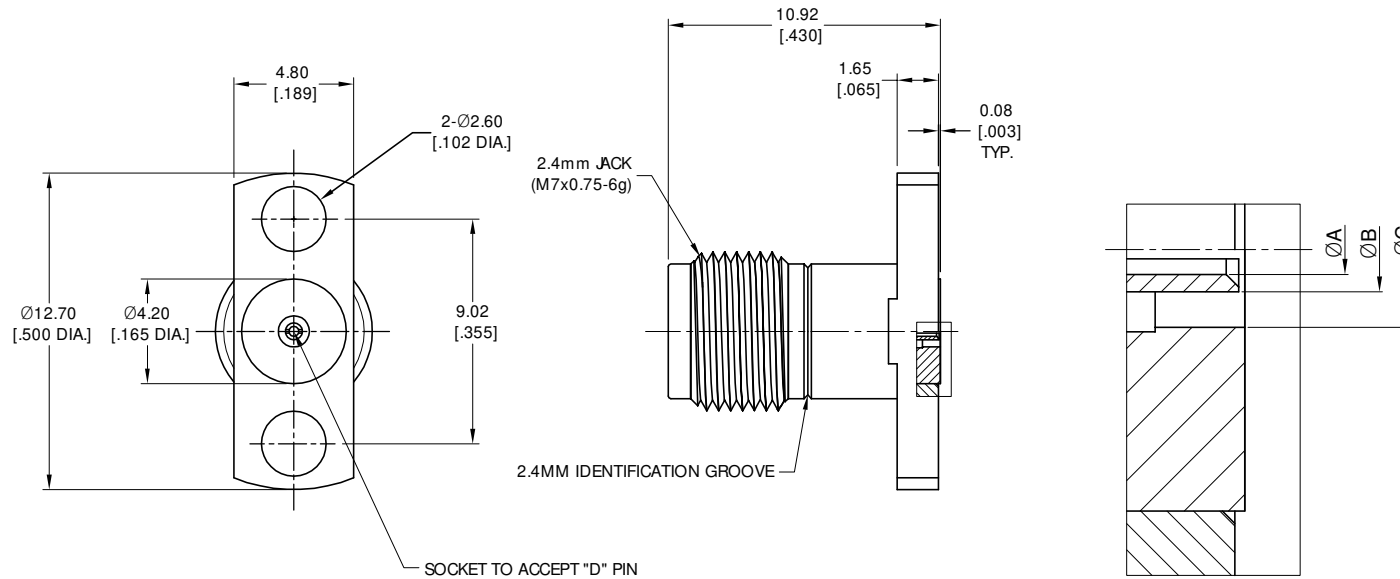
ENVIRONMENTAL DATA:

- 1 TEMPERATURE RANGE: -55 °C~+125 °C
- 2 2011/65/EU(RoHS) AND 2015/863/(RoHS): COMPLIANT
- 3 1907/2006/EC(REACH): COMPLIANT

ELECTRICAL DATA:

- 1 IMPEDANCE: 50 Ω
- 2 FREQUENCY RANGE: DC~50 GHz
- 3 VSWR: 1.10 MAX. AT DC~18 GHz
1.15 MAX. AT 18~40 GHz
1.18 MAX. AT 40~50 GHz

REVISIONS			
REV.	DESCRIPTION	DATE	APPROVED
A	INITIAL RELEASE	06/25/15	J QU
B	2.4MM IDENTIFICATION GROOV AND PART NO. ADDED	04/25/16	J QU
C	OUTLINE DRAWING CHANGED	04/20/21	J QU
D	CHANGED & ADDED DIMENSION	09/14/24	J QU



PART NO.	D	A	B	C	PIN DEPTH MAX.
ANO 2212-3009-1	Ø0.23 [.009 DIA.]	Ø0.25 [.010 DIA.]	Ø0.51 [.020 DIA.]	Ø1.10 [.043 DIA.]	1.65 [.065]
ANO 2212-3009-2	Ø0.30 [.012 DIA.]	Ø0.32 [.0126 DIA.]	Ø0.58 [.023 DIA.]	Ø1.25 [.049 DIA.]	2.16 [.085]
ANO 2212-3009-3	Ø0.51 [.020 DIA.]	Ø0.53 [.021 DIA.]	Ø0.75 [.029 DIA.]	Ø1.64 [.065 DIA.]	1.65 [.065]
ANO 2212-3009-4	Ø0.38 [.015 DIA.]	Ø0.40 [.0157 DIA.]	Ø0.68 [.027 DIA.]	Ø1.45 [.057 DIA.]	2.00 [.079]
ANO 2212-3009-5	Ø0.46 [.018 DIA.]	Ø0.48 [.0189 DIA.]	Ø0.75 [.029 DIA.]	Ø1.64 [.065 DIA.]	2.00 [.079]

DRAWN	P. CHEN	DATE	09/14/24		
CHECKED	W. YANG	DATE	09/14/24		
APPROVED	J QU	DATE	09/14/24		
UNLESS OTHERWISE SPECIFIED DIMENSIONS ARE IN MILLIMETERS, DIMENSIONS IN [] ARE IN INCHES FOR CUSTOMER REFERENCE ONLY UNLESS OTHERWISE SPECIFIED TOLERANCE ARE:		THESE DRAWINGS AND SPECIFICATIONS ARE THE PROPERTY OF ANOISON ELECTRONICS LTD AND SHOULD NOT BE USED WITHOUT WRITTEN PERMISSION COPYRIGHT © 2024 ANOISON ELECTRONICS LTD		TITLE	2.4MM FEMALE, 2 HOLE FLANGE, FIELD REPLACEABLE
XX ±0.13 [.005"] X ±0.20 [.008"] X ±0.50 [.019"] X ±1" X ±2"		VIEW		PART NO.	ANO 2212-3009
		SIZE		SCALE	SHEET
		A3		5:1	1/1
				REV.	D

4

3

2

1