

MATERIAL & FINISH:

1. BODY: STAINLESS STEEL, PASSIVATED
2. CENTER CONTACT: BERYLLIUM COPPER ALLOY, GOLD PLATED
3. INSULATOR: PEI & PTFE

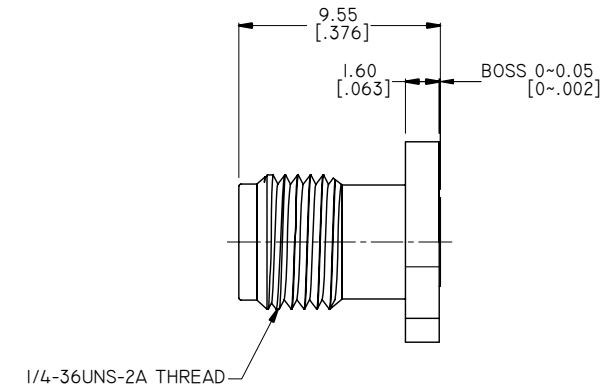
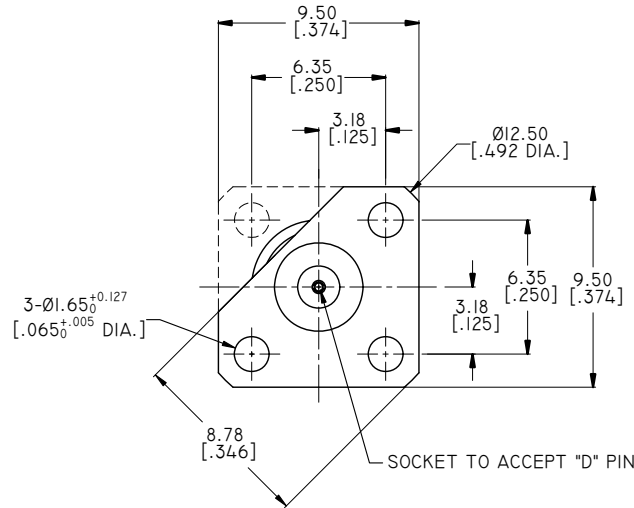
ENVIRONMENTAL DATA:

1. TEMPERATURE RANGE: -65°C~+165°C
2. 2011/65/EU (RoHS): COMPLIANT

ELECTRICAL SPECIFICATIONS:

1. IMPEDANCE: 50 Ω
2. FREQUENCY RANGE: DC~26.5GHZ
3. VSWR: 1.05+.006*F(GHZ)
4. INSERTION LOSS (DB MAX.): .04*√F(GHZ)
5. DIELECTRIC WITHSTANDING VOLTAGE: 750V

REVISIONS			
REV.	DESCRIPTION	DATE	APPROVED
C	3-Ø2.032 ^{+0.076} [.080 ^{+0.003} DIA.] WAS 3-Ø2.60 [.102 DIA.]	02/13/18	J. QU
D	3-Ø1.65 ^{+0.127} [.065 ^{+0.005} DIA.] WAS 3-Ø2.032 ^{+0.076} [.080 ^{+0.003} DIA.]	04/03/18	J. QU
E	0-0.05 [0~.002] WAS 0.02 [.001]-0.13 [.005]	04/04/18	J. QU



PART NO.	D	PIN DEPTH MAX.
ANO 2112-3453-1	Ø0.30 [.012 DIA.]	1.90 [.075]
ANO 2112-3453-2	Ø0.38 [.015 DIA.]	2.54 [.100]

DRAWN	P. CHEN	DATE	04/04/18
CHECKED	L. YANG	DATE	04/04/18
APPROVED	J. QU	DATE	04/04/18
UNLESS OTHERWISE SPECIFIED DIMENSIONS ARE IN MILLIMETERS, DIMENSIONS IN [] ARE IN INCHES FOR CUSTOMER REFERENCE ONLY UNLESS OTHERWISE SPECIFIED TOLERANCE ARE:		THESE DRAWINGS AND SPECIFICATIONS ARE THE PROPERTY OF ANOISON ELECTRONICS LTD AND SHOULD NOT BE USED WITHOUT WRITTEN PERMISSION COPYRIGHT © 2018 ANOISON ELECTRONICS LTD	
.XX	±0.08 [.003"]		
.X	±0.20 [.008"]		
X	±0.50 [.019"]		
.X°	±1°		
X°	±2°		



TITLE			
SMA STRAIGHT FEMALE, 3 HOLES FLANGE FIELD REPLACEABLE			
VIEW	PART NO.		
	ANO 2112-3453		
SIZE	SCALE	SHEET	REV.
A3	4:1	1/1	E