

1.0 MATERIAL & FINISH

1.1 BODY: SEE TABLE

1.2 CENTER CONTACT: BERYLLIUM COPPER ALLOY, GOLD PLATING

1.3 INSULATOR: PTFE & PEI

2.0 ENVIRONMENTAL DATA:

2.1 TEMPERATURE RANGE: -55°C~+165°C

2.2 2011/65/EU (RoHS): COMPLIANT

3.0 ELECTRICAL SPECIFICATIONS:

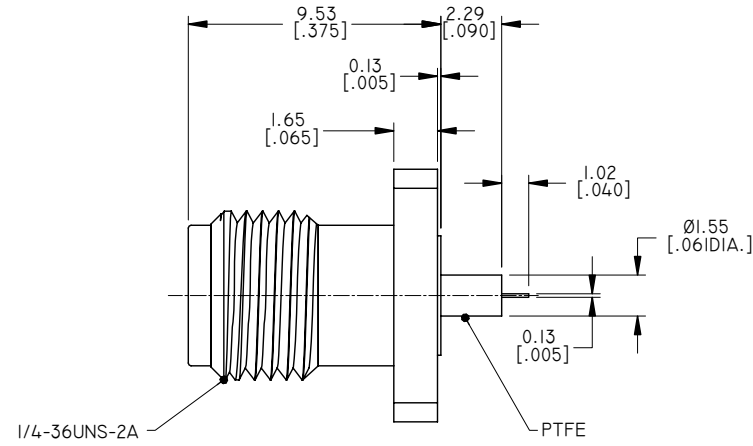
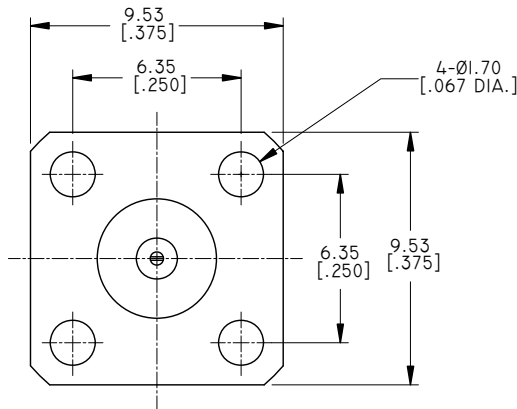
3.1 IMPEDANCE: 50 Ω

3.2 FREQUENCY RANGE: DC~27GHZ

3.3 VSWR: ≤1.10 AT DC~18GHZ

≤1.15 AT 18~27GHZ

REVISIONS			
REV.	DESCRIPTION	DATE	APPROVED
A	INITIAL RELEASE	08/07/13	J. QU
B	DRAWING FORMAT CHANGED	07/26/17	J. QU



PART NO.	PART	MATERIAL & FINISH
ANO 2112-3286-1	BODY	BRASS, GOLD PLATING
ANO 2112-3286-2		STAINLESS STEEL, GOLD PLATING

DRAWN	P. CHEN	DATE	07/26/17
CHECKED	L. YANG	DATE	07/26/17
APPROVED	J. QU	DATE	07/26/17
UNLESS OTHERWISE SPECIFIED DIMENSIONS ARE IN MILLIMETERS. DIMENSIONS IN [] ARE IN INCHES FOR CUSTOMER REFERENCE ONLY UNLESS OTHERWISE SPECIFIED TOLERANCE ARE:		THESE DRAWINGS AND SPECIFICATIONS ARE THE PROPERTY OF ANOISON ELECTRONICS LTD AND SHOULD NOT BE USED WITHOUT WRITTEN PERMISSION COPYRIGHT © 2017 ANOISON ELECTRONICS LTD	
.XX	±0.13 [.005"]		
.X	±0.20 [.008"]		
X	±0.50 [.019"]		
.X°	±1°		
X°	±2°		



TITLE
SMA STRAIGHT FEMALE 4 HOLE FLANGE MOUNT PANEL, POST CONTACT

VIEW	PART NO.	SIZE	SCALE	SHEET	REV.
	ANO 2112-3286	A3	5:1	1/1	B