

MATERIAL & FINISH:

- 1 BODY: STAINLESS STEEL, PASSIVATED
- 2 CENTER CONTACT: BERYLLIUM COPPER ALLOY, GOLD PLATED
- 3 INSULATOR: PTFE & PEI
- 4 COUPLING NUT: STAINLESS STEEL, PASSIVATED
- 5 RETAINING RING: BERYLLIUM COPPER ALLOY, NICKEL PLATED

ENVIRONMENTAL DATA:

- 1 TEMPERATURE RANGE: -65°C~+165°C
- 2 2011/65/EU (RoHS): COMPLIANT

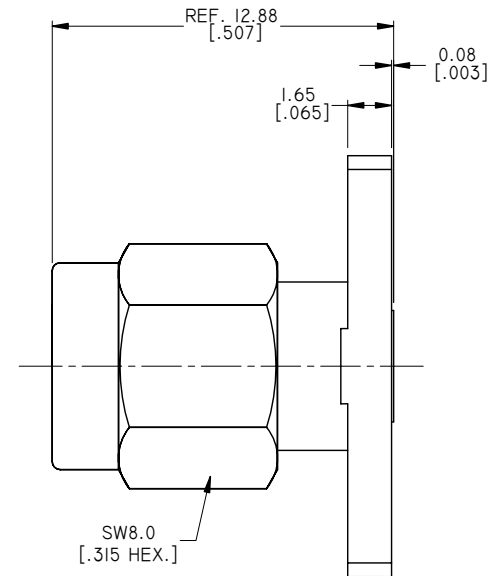
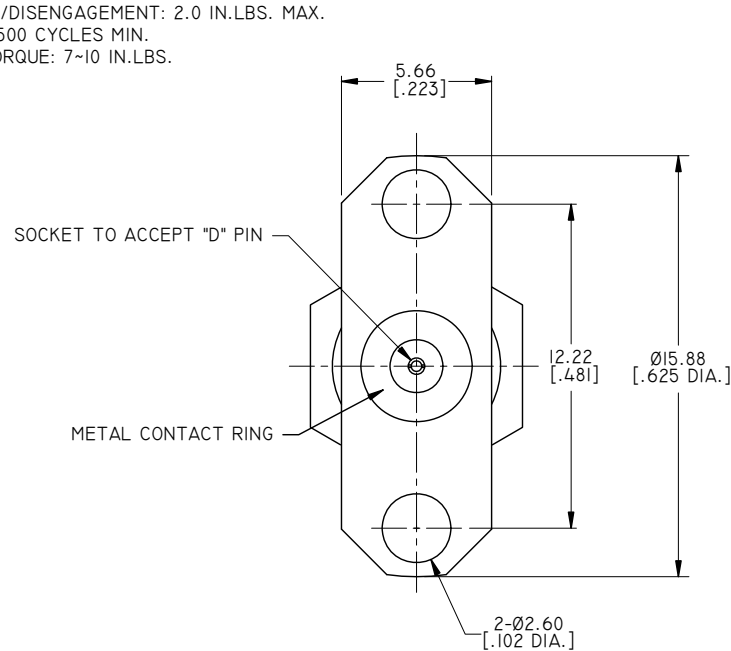
MECHANICAL DATA:

- 1 CAPTIVATION-CENTER CONTACT
AXIAL FORCE: 6.0 LBS MAX.
RADIAL TORQUE: 4.0 OZ. MAX.
- 2 CENTER CONTACT AXIAL FORCES
INSERTION: 48.0 OUNCES MIN.
WITHDRAWAL: 2.0 OUNCES MIN.
- 3 CONNECTOR ENGAGEMENT/DISENGAGEMENT: 2.0 IN.LBS. MAX.
- 4 CONNECTOR DURABILITY: 500 CYCLES MIN.
- 5 RECOMMENDED MATING TORQUE: 7~10 IN.LBS.

ELECTRICAL DATA:

- 1 IMPEDANCE: 50 Ω
- 2 FREQUENCY RANGE: DC~26.5 GHZ
- 3 VSWR: 1.05+0.006 X FGHZ MAX.
- 4 INSERTION LOSS: 0.03 X √FGHZ DB MAX.
- 5 VOLTAGE RATING: 250 VRMS MAX.
- 6 RF LEAKAGE: -100 DB - FGHZ
- 7 DIELECTRIC WITHSTANDING VOLTAGE: 750 VRMS MAX.
- 8 INSULATION RESISTANCE: 10,000 MEGOHMS MIN.
- 9 CONTACT RESISTANCE
CENTER CONTACT: 6.0 MILLIOHMS MAX.
OUTER CONTACT: 2.0 MILLIOHMS MAX.

REVISIONS			
REV.	DESCRIPTION	DATE	APPROVED
A	INITIAL RELEASE	09/18/13	J. QU
B	1. CHANGED ELECTRICAL SPECIFICATIONS 2. PART NO. ADDED	05/21/15	J. QU



PART NO.	D	MAX. PIN DEPTH
ANO 2111-3292-1	Ø0.23 [.009 DIA.]	1.65 [.065]
ANO 2111-3292-2	Ø0.30 [.012 DIA.]	1.91 [.075]
ANO 2111-3292-3	Ø0.38 [.015 DIA.]	2.54 [.100]
ANO 2111-3292-4	Ø0.46 [.018 DIA.]	2.54 [.100]
ANO 2111-3292-5	Ø0.51 [.020 DIA.]	2.54 [.100]
ANO 2111-3292-6	Ø0.91 [.036 DIA.]	2.54 [.100]

DRAWN	L. YANG	DATE	05/21/15
CHECKED	X. B. YANG	DATE	05/21/15
APPROVED	J. QU	DATE	05/21/15
UNLESS OTHERWISE SPECIFIED DIMENSIONS ARE IN MILLIMETERS. DIMENSIONS IN [] ARE IN INCHES FOR CUSTOMER REFERENCE ONLY UNLESS OTHERWISE SPECIFIED TOLERANCE ARE:		THESE DRAWINGS AND SPECIFICATIONS ARE THE PROPERTY OF ANOISON ELECTRONICS LTD AND SHOULD NOT BE USED WITHOUT WRITTEN PERMISSION COPYRIGHT © 2015 ANOISON ELECTRONICS LTD	
.XX	±0.13 [.005"]		
.X	±0.20 [.008"]		
X	±0.50 [.019"]		
.X°	±1°		
X°	±2°		



TITLE			
SMA STRAIGHT MALE 2 HOLE FLANGE .625 LONG, FIELD REPLACEABLE			
VIEW		PART NO.	
		ANO 2111-3292	
SIZE	SCALE	SHEET	REV.
A3	5:1	1/1	B