

MATERIAL & FINISH:

- 1 BODY: SEE TABLE
- 2 CENTER CONTACT: SEE TABLE
- 3 INSULATOR: PTFE
- 4 COUPLING NUT: SEE TABLE

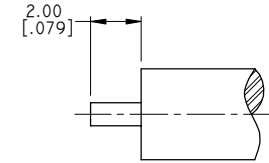
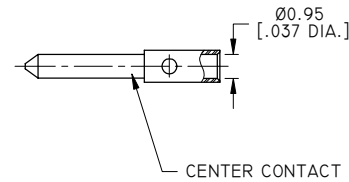
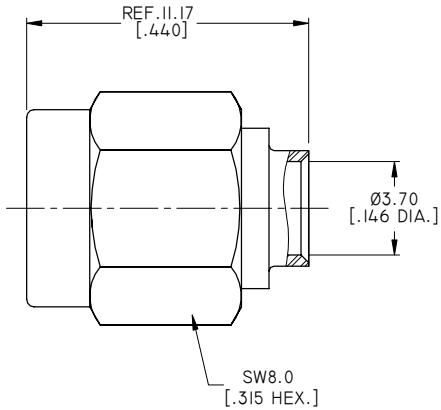
ELECTRICAL DATA:

- 1. IMPEDANCE: 50 Ω
- 2. FREQUENCY RANGE: DC~18 GHZ
- 3. VSWR: 1.10 MAX. AT DC~12 GHZ
1.20 MAX. AT 12~18 GHZ

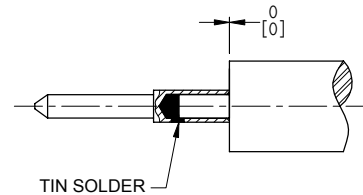
ENVIRONMENTAL DATA:

- 1 TEMPERATURE RANGE: -55°C~+125°C
- 2 2011/65/EU(RoHS) AND 2015/863/(RoHS): COMPLIANT
- 3 1907/2006/EC(REACH): COMPLIANT

| REVISIONS | | | |
|-----------|--------------------------------|----------|----------|
| REV. | DESCRIPTION | DATE | APPROVED |
| A | INITIAL RELEASE | 03/11/16 | J. Q |
| B | PART NO. CHANGED | 12/10/16 | J. Q |
| C | ADDED PART NO. | 12/23/16 | J. Q |
| D | PART NO. ANO 2111-2384-5 ADDED | 03/05/20 | J. Q |
| E | VSWR CHANGED | 08/02/23 | J. Q |
| F | FREQUENCY RANGE & VSWR CHANGED | 08/03/23 | J. Q |
| G | PART NO. ANO 2111-2384-6 ADDED | 05/21/24 | J. Q |



CABLE STRIPPING DIMENSIONS



TIN SOLDER

| PART NO. | MATERIAL & FINISH | | |
|-----------------|----------------------|------------------------------|-----------------------------|
| | CENTER CONTACT | BODY | COUPLING NUT |
| ANO 2111-2384-1 | BRASS, GOLD PLATED | BRASS, GOLD PLATED | BRASS, GOLD PLATED |
| ANO 2111-2384-2 | BRASS, GOLD PLATED | BRASS, GOLD PLATED | STAINLESS STEEL, PASSIVATED |
| ANO 2111-2384-3 | BRASS, GOLD PLATED | STAINLESS STEEL, GOLD PLATED | STAINLESS STEEL, PASSIVATED |
| ANO 2111-2384-4 | BRASS, GOLD PLATED | BRASS, GOLD PLATED | BRASS, NICKEL PLATED |
| ANO 2111-2384-5 | BRASS, SILVER PLATED | BRASS, ALBALOY PLATED | BRASS, ALBALOY PLATED |
| ANO 2111-2384-6 | BRASS, GOLD PLATED | BRASS, GOLD PLATED | BRASS, BLACK PLATED |

| | | |
|-----------------------------------------------------------------------------------------------------------------------------------------------------------------------------------------|------------------|--------------------------------------------------|
| DRAWN X. Y | DATE 05/21/24 | |
| CHECKED W. Y | DATE 05/21/24 | |
| APPROVED J. Q | DATE 05/21/24 | |
| <small>UNLESS OTHERWISE SPECIFIED DIMENSIONS ARE IN MILLINETERS, DIMENSIONS IN [] ARE IN INCHES FOR CUSTOMER REFERENCE ONLY UNLESS OTHERWISE SPECIFIED TOLERANCE ARE:</small> | | TITLE SMA STRAIGHT MALE SOLDER FOR .141 CABLE |
| <small>THESE DRAWINGS AND SPECIFICATIONS ARE THE PROPERTY OF ANOISON ELECTRONICS LTD AND SHOULD NOT BE USED WITHOUT WRITTEN PERMISSION COPYRIGHT © 2024 ANOISON ELECTRONICS LTD</small> | | PART NO. ANO 2111-2384 |
| VIEW | SIZE A3 | SCALE 5:1 |
| | SHEET 1/1 | REV. G |