

MATERIAL & FINISH:

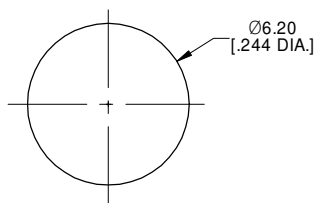
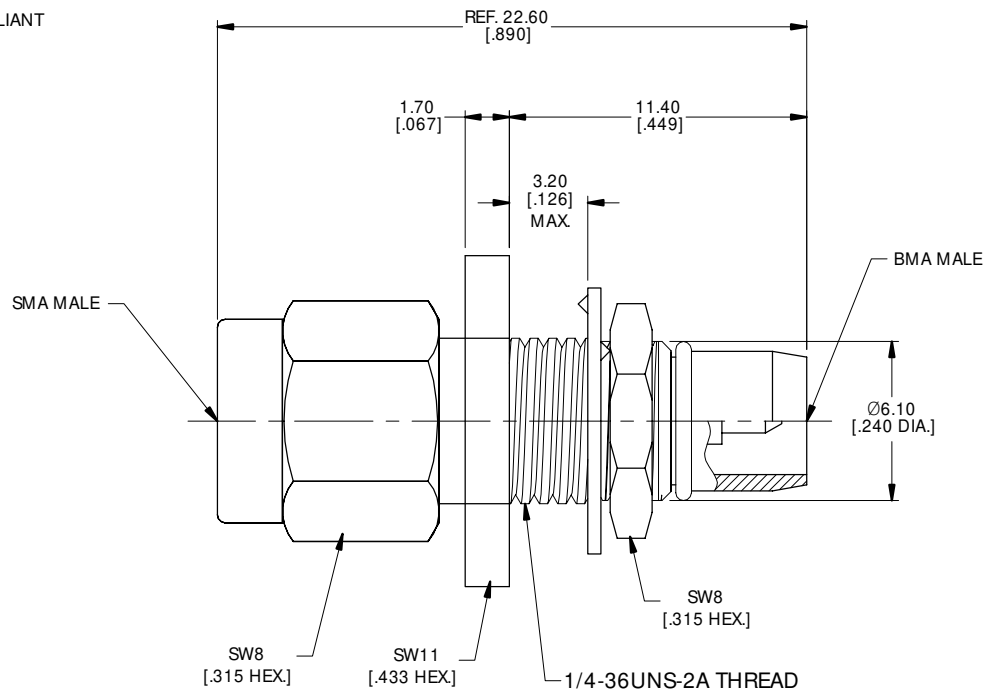
- 1 BODY: STAINLESS STEEL, PASSIVATED
- 2 CENTER CONTACT: BRASS, GOLD PLATED
- 3 INSULATOR: PTFE
- 4 FASTENING NUT: STAINLESS STEEL, PASSIVATED
- 5 WASHER LOCK: STAINLESS STEEL, PASSIVATED
- 6 O-RING: SILICONE RUBBER

ELECTRICAL DATA:

- 1 IMPEDANCE: 50 Ω
- 2 FREQUENCY RANGE: DC~12 GHz


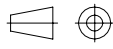
ENVIRONMENTAL DATA:

- 1 TEMPERATURE RANGE: -55°C~+125°C
- 2 2011/65/EU(RoHS) AND 2015/863/(RoHS): COMPLIANT
- 3 1907/2006/EC(REACH): COMPLIANT



RECOMMENDED MOUNTING HOLE

REVISIONS			
REV.	DESCRIPTION	DATE	APPROVED
A	INITIAL RELEASE	12/09/20	J QU

DRAWN		DATE	
X. B. YANG		12/09/20	
CHECKED		DATE	
W. YANG		12/09/20	
APPROVED		DATE	
J QU		12/09/20	
UNLESS OTHERWISE SPECIFIED DIMENSIONS ARE IN MILLIMETERS. DIMENSIONS IN [] ARE IN INCHES FOR CUSTOMER REFERENCE ONLY UNLESS OTHERWISE SPECIFIED TOLERANCE ARE:		THESE DRAWINGS AND SPECIFICATIONS ARE THE PROPERTY OF ANOISON ELECTRONICS LTD AND SHOULD NOT BE USED WITHOUT WRITTEN PERMISSION COPYRIGHT © 2020 ANOISON ELECTRONICS LTD	
.XX ±0.13 [.005"]			
.X ±0.20 [.008"]			
X ±0.50 [.019"]			
X° ±1°			
X° ±2°			
VIEW		TITLE	
		ADAPTER, SMA MALE TO BMA BULKHEAD MALE	
PART NO.		ANO 211-141-1554	
SIZE	A3	SCALE	SHEET
		5:1	1/1
REV.		A	