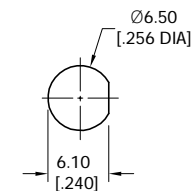
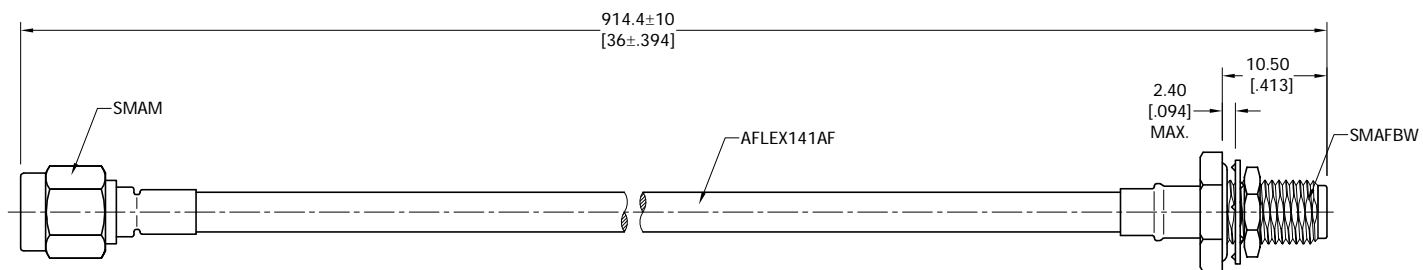


ELECTRICAL DATA:

- 1 IMPEDANCE: 50 Ω
- 2 FREQUENCY RANGE: DC-6GHz
- 3 VSWR: 1.20 MAX.
- 4 INSERTION LOSS: 1.45 dB MAX.



RECOMMENDED MOUNTING HOLE



TITLE
 CABLE ASSEMBLY, SMA STRAIGHT MALE TO SMA STRAIGHT
 BULKHEAD WATERPROOF FEMALE, AFLEX141AF CABLE,
 36 INCHES

- NOTES:
 1. UNLESS OTHERWISE SPECIFIED ALL DIMENSIONS ARE NOMINAL.
 2. ALL SPECIFICATIONS ARE SUBJECT TO CHANGED WITHOUT NOTICE AT ANY TIME.
 3. DIMENSIONS ARE IN MILLIMETERS, DIMENSIONS IN [] ARE IN INCHES
 4. LENGTH TOLERANCE IS ±2%.

VIEW	PART NO.			
	AF141AF-SMAM-SMAFBW-36			
SIZE	SCALE	SHEET	REV.	
A3	2:1	1/1	A	