

4

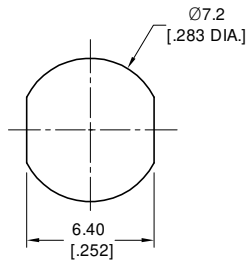
3

2

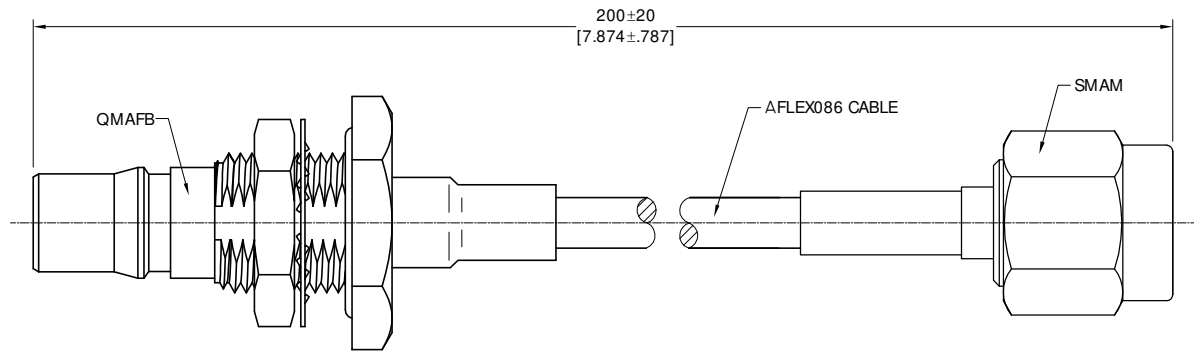
1

ELECTRICAL DATA:

- 1 IMPEDANCE: 50 OHMS
- 2 FREQUENCY RANGE: DC~18 GHz
- 3 VSWR: 1.20 MAX @ 6 GHz
- 4 INSERTION LOSS: 1.15 dB MAX @ 12 GHz



RECOMMENDED MOUNTING HOLE



TITLE

CABLE ASSEMBLY, QMA FEMALE BULKHEAD TO SMA
STRAIGHT MALE, AFLEX086 CABLE, 200MM

VIEW



PART NO.

AF086-QMAFB-SMAM-200MM

SIZE
A3

SCALE
4:1

SHEET
1/1

REV.
A

NOTES:

- 1. UNLESS OTHERWISE SPECIFIED ALL DIMENSIONS ARE NOMINAL.
- 2. ALL SPECIFICATIONS ARE SUBJECT TO CHANGE WITHOUT NOTICE AT ANY TIME.
- 3. DIMENSIONS ARE IN MILLIMETERS, DIMENSIONS IN [] ARE IN INCHES.
- 4. LENGTH TOLERANCE IS ±2%.

4

3

2

1