

M10 Connector Series



The new ANOISON M10 connector is a small, low PIM coaxial connector designed for use in cellular networks. It is intermateable with the NEX10™ connector, which was originally released by Huber + Suhner, Radiall and Rosenberger. Similar to the 4.3-10 connector, the standard M10 female connector will mate with both the screw and push-pull coupling mechanism of the M10 male connector. It also will match the 12.7mm standard flange mount of the SMA connector, which facilitates a high installation density.



Mechanical Characteristics

Coupling Mechanisms: Torque, Push-Pull
 Durability (mating cycles): 100 min. 500 for test and measurement types
 Interface Retention Force: Quick-lock: 150 N min.
 Screw: 500 N min.

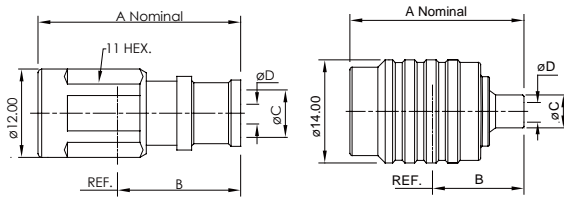
Environmental Characteristics

Temperature Range: -55°C/+125°C
 RoHS: Compliant

Main Specifications

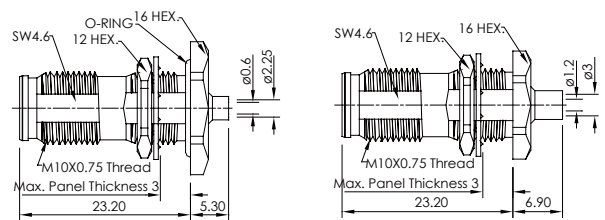
Impedance: 50Ω
 Frequency range: DC~20 GHz
 VSWR: ≤1.05 @ DC~4 GHz
 ≤1.07 @ 4~6 GHz
 ≤1.10 @ 6~10 GHz
 ≤1.25 @ 10~20 GHz
 VOLTAGE: 1000V
 PIM: -166dBc, 2x43 & 2x40 dBm (static and dynamic)

STRAIGHT PLUGS SOLDER TYPE



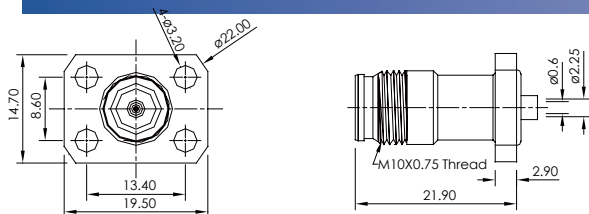
Part No.	Cable Group	Dimensions				Finish	Coupling mechanism
		A	B	C	D		
ANO 7411-2001	RG402	24.3	12.8	3.8	1.2	Silver + Albaloy	Screw-on
ANO 7411-2001-1							Push pull
ANO 7411-2002	1/4" Superflexible	26.7	15.2	7	2		Screw-on
ANO 7411-2002-1							Push pull

BULKHEAD JACKS



Part No.	Cable Group	Finish
ANO 7412-2003	RG402	Silver + Albaloy
ANO 7412-2003-1		
ANO 7412-2004	RG405	
ANO 7412-2004-1		

FLANGE JACKS

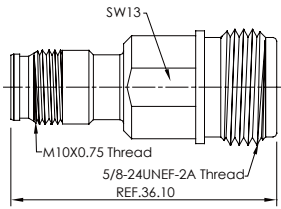


Part No.	Cable Group	Finish
ANO 7412-2005	RG402	Silver + Albaloy
ANO 7412-2005-1		
ANO 7412-2006	RG405	
ANO 7412-2006-1		

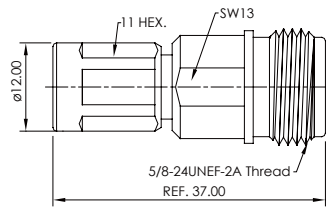
M10 Connector Series



ADAPTERS



ANO 742-512-1419



ANO 741-512-1420

Part No.	Finish
ANO 742-512-1419	Silver + Albaloy
ANO 741-512-1420	Silver + Albaloy

TOOLS



Part No.	Across flats S (mm)	Przeset Torque
ANO TW-043	11	3 N.m